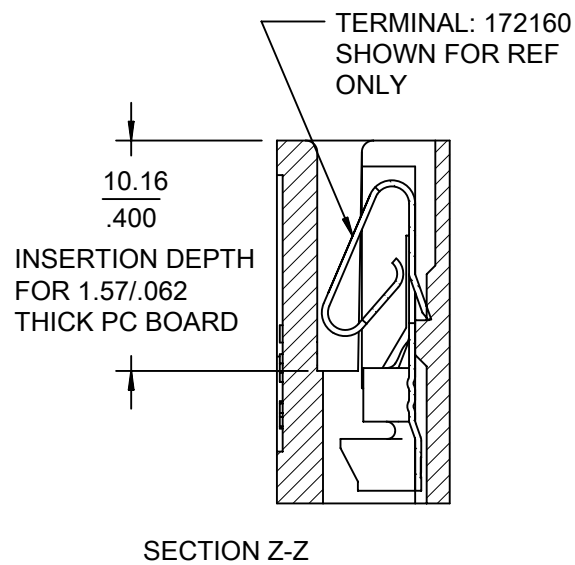
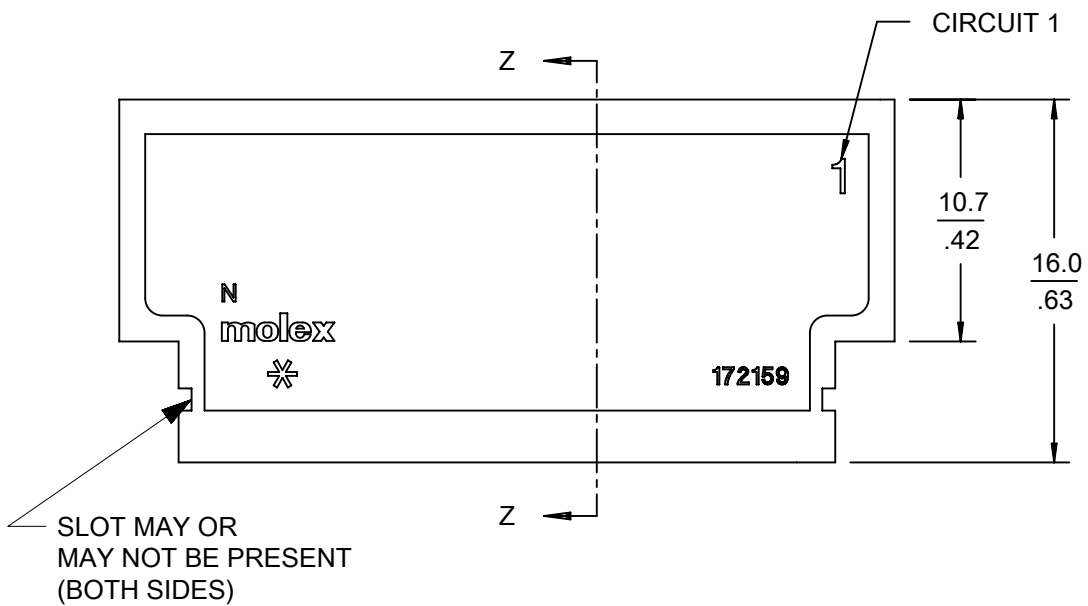
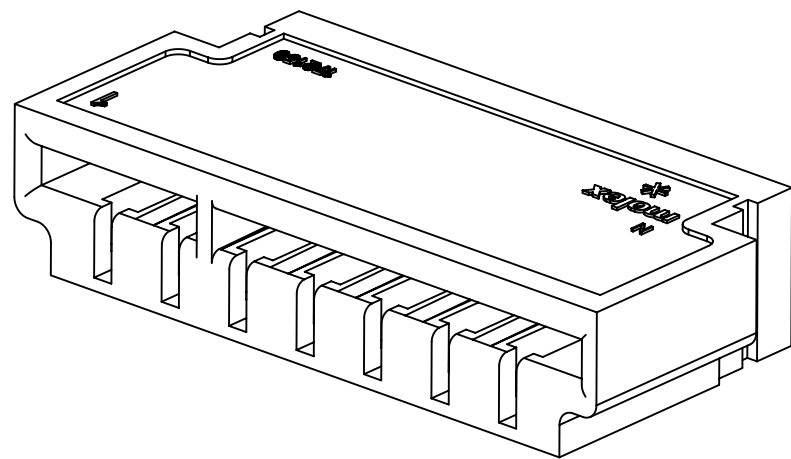


- NOTES:
1. MATERIAL: NYLON 6, 94V-2, GLOW WIRE CAPABLE PER IEC 60335-1, COLOR: BLACK
 2. FINISH: N/A
 3. PRODUCT SPECIFICATION: PS-172160-0001
 4. PACKAGING SPECIFICATION: PK-172159-0001
 5. COSMETIC SPECIFICATION: PS-45499-002 CLASS B
 6. HOUSING ACCEPTS TERMINAL: 172160
 7. DIMENSION TO BE 2.54-2.79 / .100-.110 TO POLARIZE HOUSING AND PCB.



CKTS	MATERIAL NO	POL RIB	DIM A	DIM B	DIM C	DIM E
03	172879-0003	N/A	$\frac{15.71}{.619}$	$\frac{20.24}{.797}$	$\frac{16.07}{.633}$	$\frac{7.92}{.312}$
04	172879-0004	N/A	$\frac{19.71}{.776}$	$\frac{22.30}{.878}$	$\frac{20.06}{.790}$	$\frac{11.89}{.468}$
05	172879-0205	2-3	$\frac{23.50}{.925}$	$\frac{26.26}{1.034}$	$\frac{24.06}{.947}$	$\frac{15.85}{.624}$
06	172879-0206	2-3	$\frac{27.49}{1.082}$	$\frac{30.23}{1.190}$	$\frac{28.05}{1.104}$	$\frac{19.81}{.780}$
07	172879-0207	2-3	$\frac{31.43}{1.238}$	$\frac{34.19}{1.346}$	$\frac{32.04}{1.262}$	$\frac{23.77}{.936}$
08	172879-0208	3-4	$\frac{35.43}{1.395}$	$\frac{38.15}{1.502}$	$\frac{36.03}{1.419}$	$\frac{27.74}{1.092}$
09	172879-0209	3-4, 7-8	$\frac{39.42}{1.552}$	$\frac{42.11}{1.658}$	$\frac{40.03}{1.576}$	$\frac{31.70}{1.248}$
10	172879-0210	3-4, 6-7	$\frac{43.41}{1.709}$	$\frac{46.08}{1.814}$	$\frac{44.02}{1.733}$	$\frac{35.66}{1.404}$
11	172879-0211	3-4, 7-8	$\frac{47.35}{1.864}$	$\frac{50.04}{1.970}$	$\frac{48.01}{1.890}$	$\frac{39.62}{1.560}$
12	172879-0212	3-4, 8-9	$\frac{51.35}{2.022}$	$\frac{54.00}{2.126}$	$\frac{52.01}{2.048}$	$\frac{43.59}{1.716}$



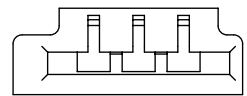
THIS DRAWING CONTAINS INFORMATION THAT IS PROPRIETARY TO MOLEX ELECTRONIC TECHNOLOGIES, LLC AND SHOULD NOT BE USED WITHOUT WRITTEN PERMISSION

QUALITY SYMBOLS	ADD SLOT NOTE EC NO: 101899 DRWN: MKIPPER CHK'D: JBELL APPR: FSMITH	GENERAL TOLERANCES (UNLESS SPECIFIED) ANGULAR TOL ± ° 4 PLACES ± 3 PLACES ± 2 PLACES ± 0.25 1 PLACE ± 0.38 0 PLACES ± DRAFT WHERE APPLICABLE MUST REMAIN WITHIN DIMENSIONS	DIMENSION UNITS	SCALE	 EGDEMATE 3.96/.156 GLOW WIRE HOUSING WITHOUT HOOKS PRODUCT CUSTOMER DRAWING
			MM/IN	3:1	
DRWN BY	DATE	CHK'D BY	DATE		
MKIPPER	2015/02/10	JBELL	2015/02/10		
APP'R BY	DATE	APPR BY	DATE		
FSMITH	2015/06/15	FSMITH	2015/06/15		
DRAWING SIZE	THIRD ANGLE PROJECTION	SERIES	MATERIAL NUMBER	CUSTOMER	172879 SEE CHART GENERAL MARKET
B		172879	SEE CHART	GENERAL MARKET	
DOCUMENT NUMBER		DOC TYPE	DOC PART	SHEET NUMBER	
SD-172879-0000		PSD	000	1 OF 2	

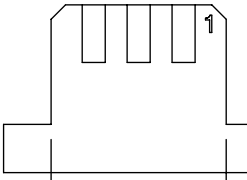
MODEL: TM-172159-0000

RELEASE STATUS P1 RELEASE DATE 05.02.2016 22:23:33

172879-0003



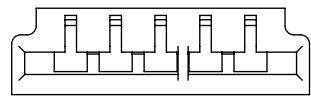
3 2 1 CIRCUITS



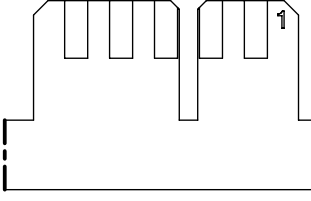
4.19
.165
MIN. THIS SIDE
ONLY ON 3 CKT

2.79
.110
MAX.
3 CKT ONLY
SEE NOTE 7

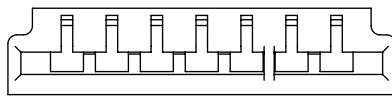
172879-0205



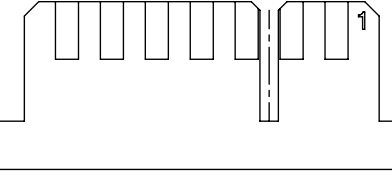
5 4 3 2 1 CIRCUITS



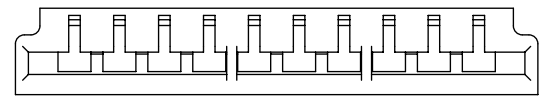
172879-0207



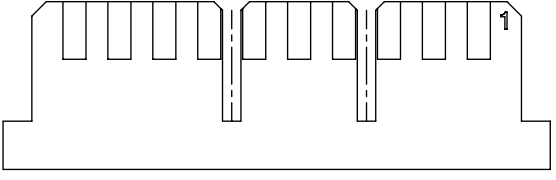
7 6 5 4 3 2 1 CIRCUITS



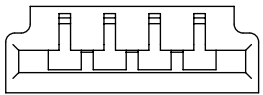
172879-0210



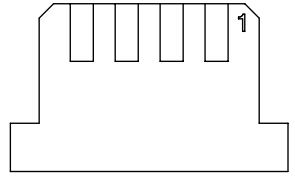
10 9 8 7 6 5 4 3 2 1 CIRCUITS



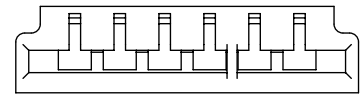
172879-0004



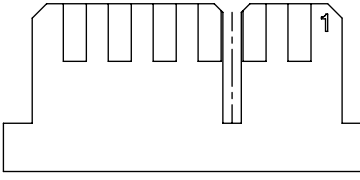
4 3 2 1 CIRCUITS



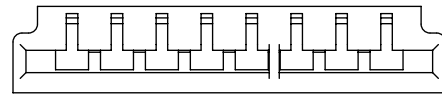
172879-0206



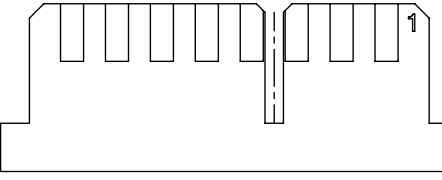
6 5 4 3 2 1 CIRCUITS



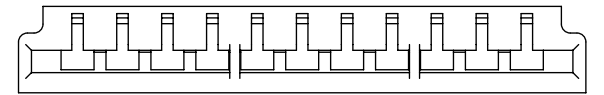
172879-0208



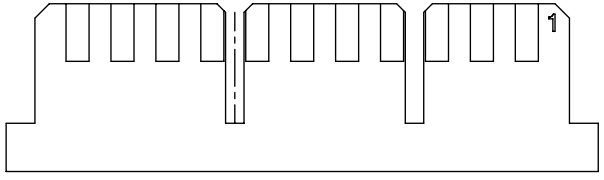
8 7 6 5 4 3 2 1 CIRCUITS



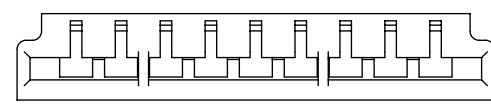
172879-0211



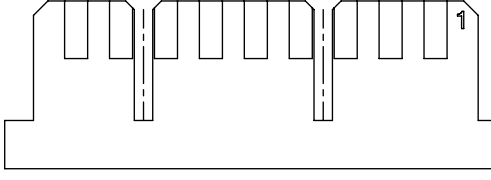
11 10 9 8 7 6 5 4 3 2 1 CIRCUITS



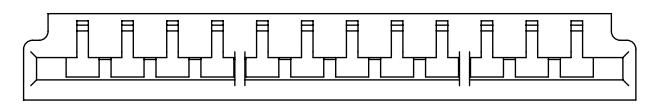
172879-0209



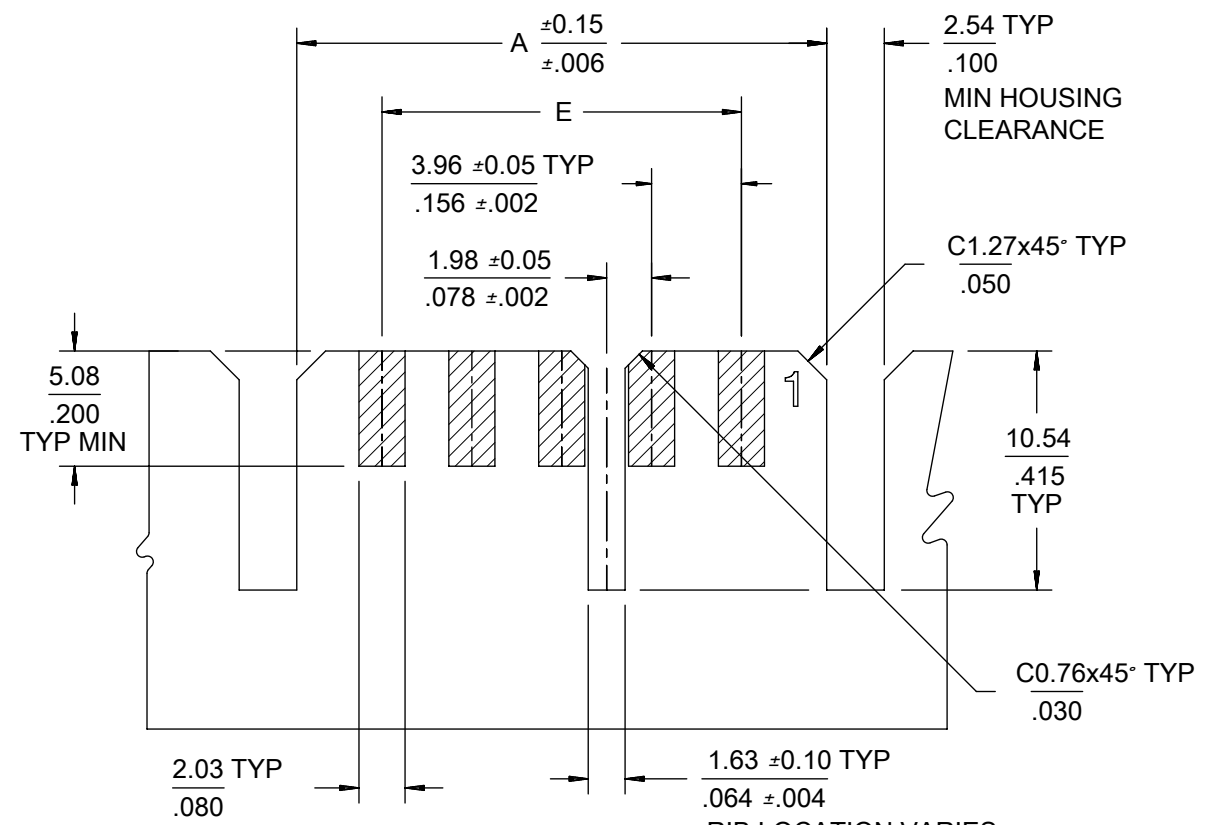
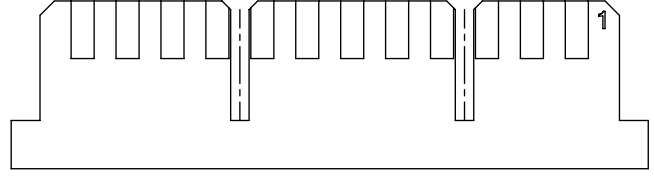
9 8 7 6 5 4 3 2 1 CIRCUITS



172879-0212



12 11 10 9 8 7 6 5 4 3 2 1 CIRCUITS



GENERIC PCB LAYOUT
PCB THICKNESS: 1.57/.062

RIB LOCATION VARIES
BY CKT SIZE SEE
CHART FOR LOCATION

THIS DRAWING CONTAINS INFORMATION THAT IS PROPRIETARY TO MOLEX ELECTRONIC TECHNOLOGIES, LLC AND SHOULD NOT BE USED WITHOUT WRITTEN PERMISSION

QUALITY SYMBOLS	ADD SLOT NOTE	EC NO: 101899 DRWN: MKIPPER CHKD: JBELL APPR: FSMITH	GENERAL TOLERANCES (UNLESS SPECIFIED)		DIMENSION UNITS	SCALE
			ANGULAR TOL ± °		MM/IN	1.5:1
▽ = 0			4 PLACES ±	DRWN BY	DATE	
▽ = 0			3 PLACES ±	MKIPPER	2015/02/10	
▽ = 0			2 PLACES ± 0.25	CHK'D BY	DATE	
▽ = 0			1 PLACE ± 0.38	JBELL	2015/02/10	
▽ = 0			0 PLACES ±	APPR BY	DATE	
▽ = 0			DRAFT WHERE APPLICABLE MUST REMAIN WITHIN DIMENSIONS	FSMITH	2015/06/15	
▽ = 0				DRAWING SIZE	THIRD ANGLE PROJECTION	
				B		

molex			
EGDEMATE 3.96/.156 GLOW WIRE HOUSING WITHOUT HOOKS			
PRODUCT CUSTOMER DRAWING			
SERIES	MATERIAL NUMBER	CUSTOMER	
172879	SEE CHART	GENERAL MARKET	
DOCUMENT NUMBER		DOC TYPE	DOC PART SHEET NUMBER
SD-172879-0000		PSD	000 2 OF 2