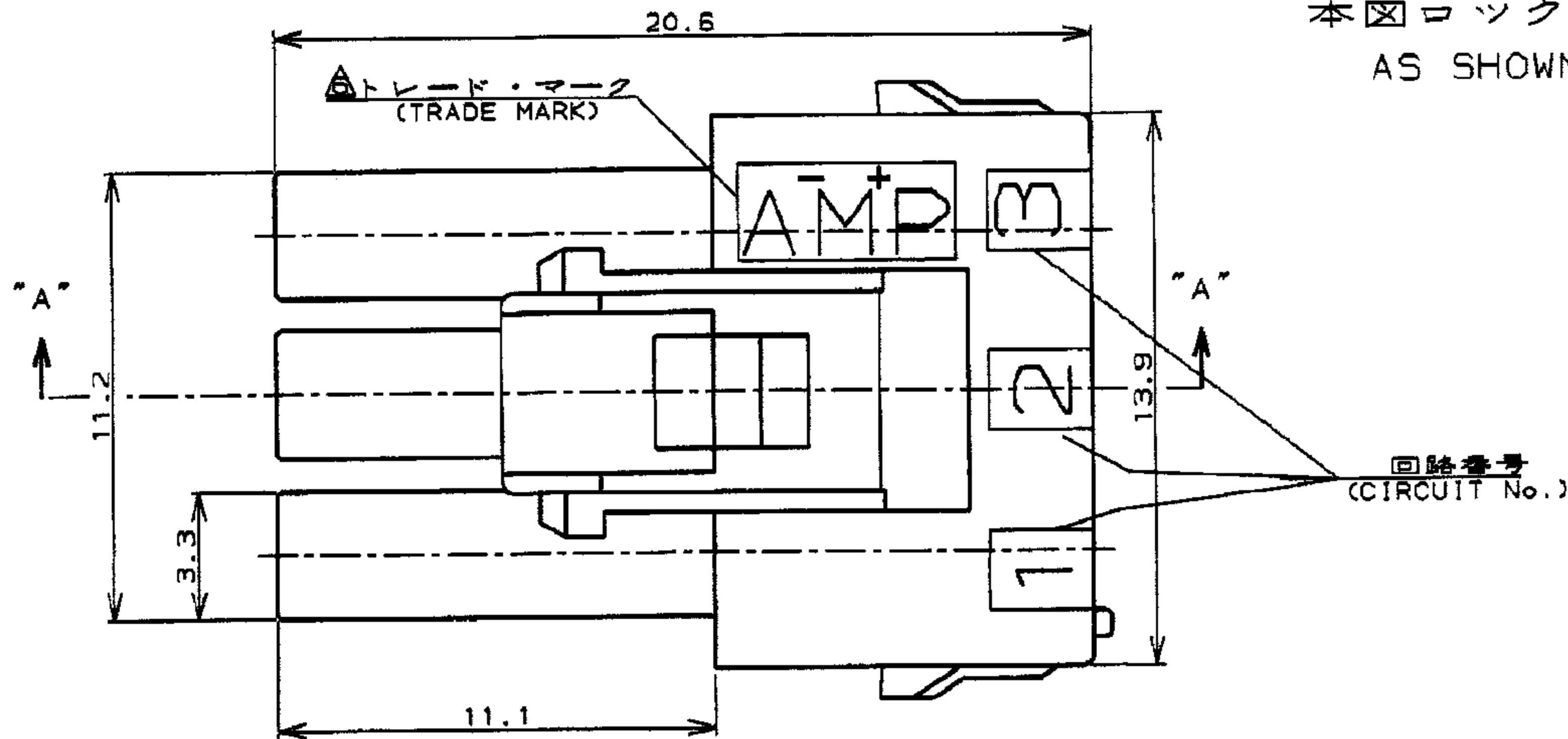
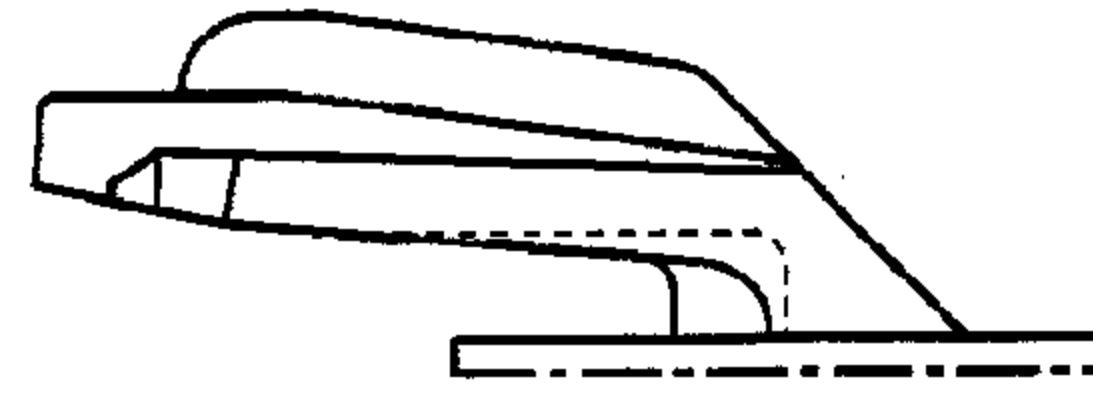
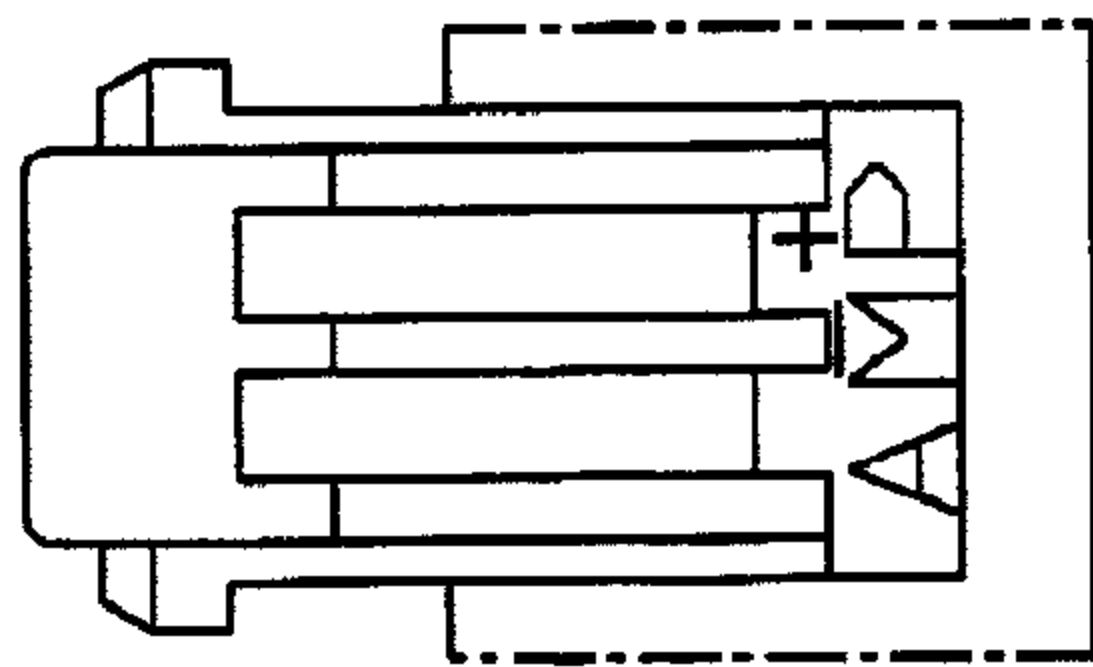
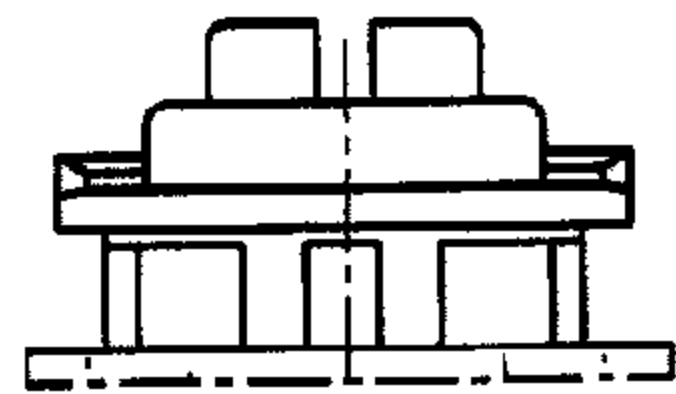


NUMBER
C-177901

三角錐 (3rd ANGLE PROJECTION)

METRIC

ロックタイプII
LOCK TYPE II



本図ロックタイプIを示す
AS SHOWN LOCK TYPE I

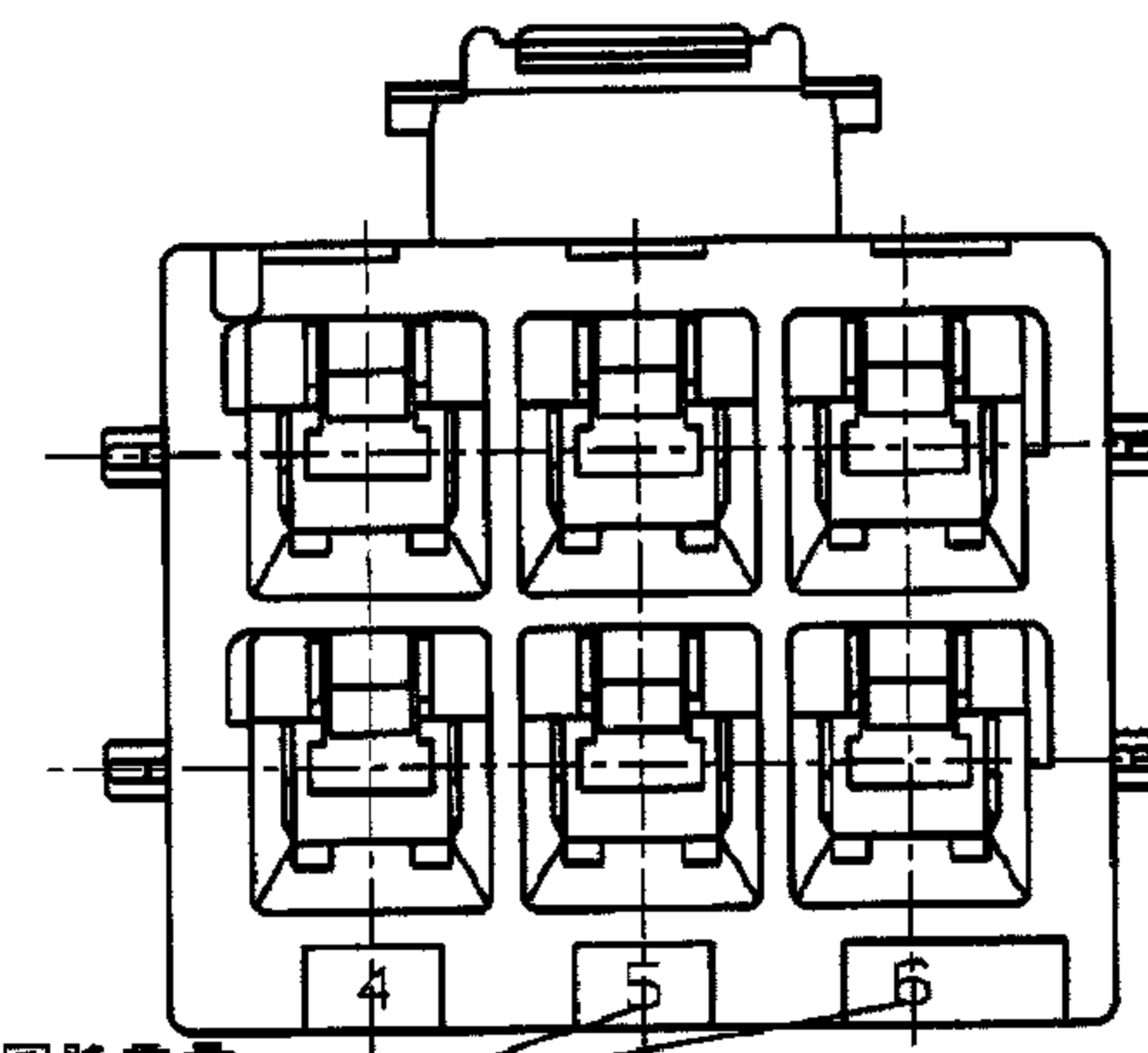
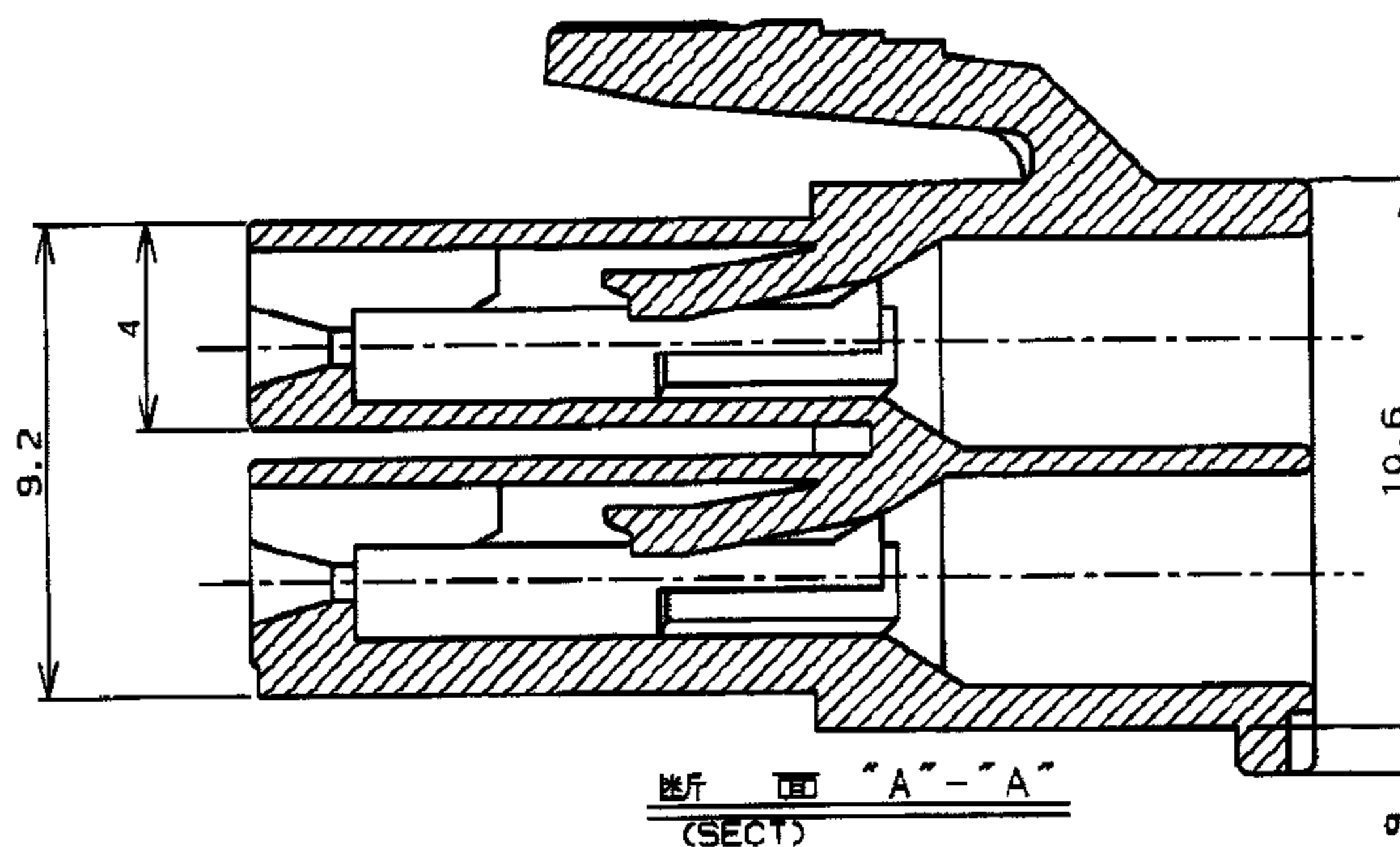
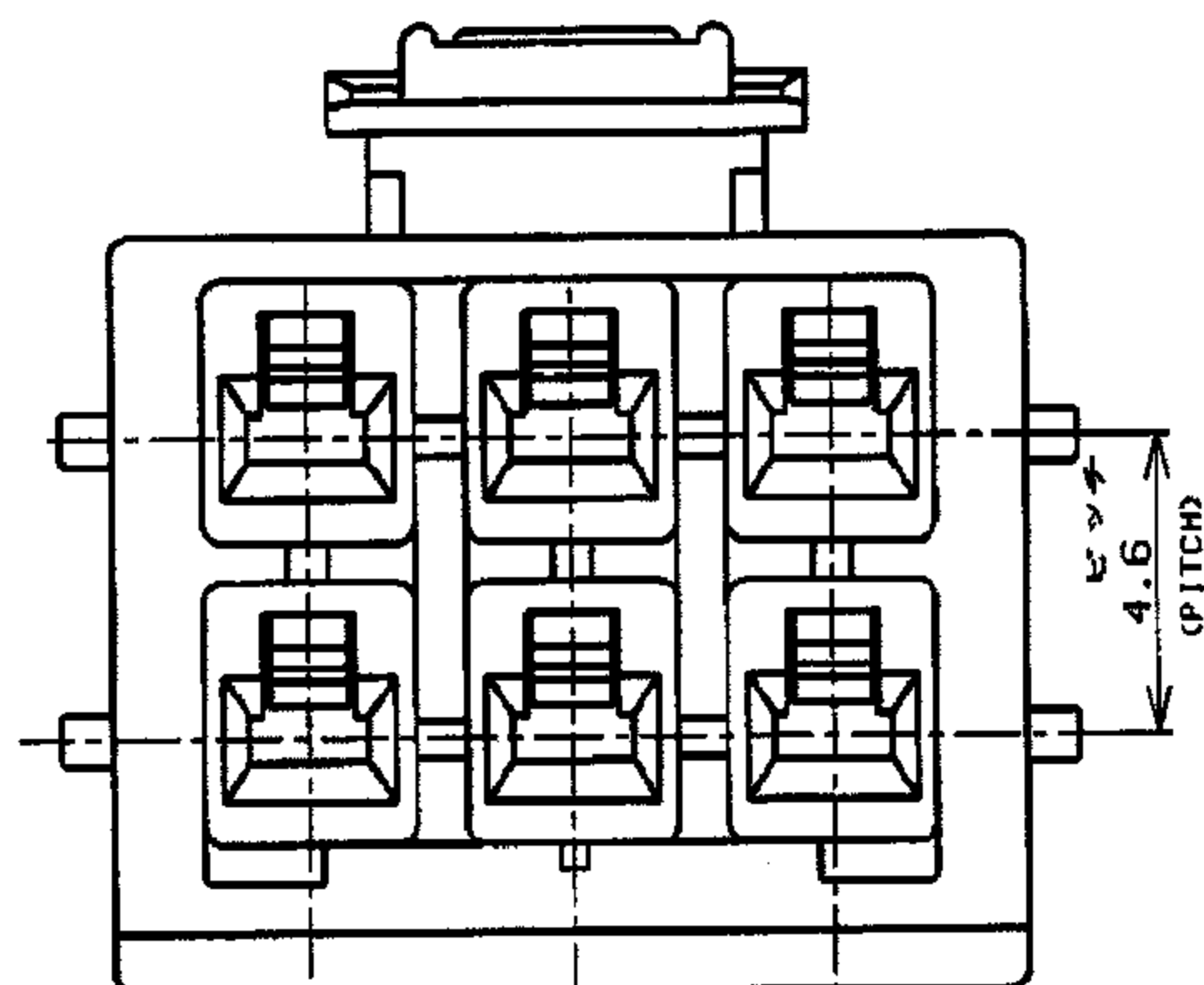


表1 (TABLE 1)

トレードマーク (TRADE MARK)	生産場所 (MANUFACTURING PLACE)
— AMP OR AMP	日本 (JAPAN)
—+ AMP OR AMP	中国 (CHINA(PRC))
AMP OR AMP	韓国 (KOREA)

SEE TABLE 1

- ALL PARTS MEET RTI ELECTRICAL RATING OF 105C ACCORDING TO UL 1977
- PART 1-177901-5 MEET BELOW REQUIREMENT . MATERIAL: NYLON UL 94-V0 BLACK . MAXIMUM RATING TEMPERATURE 150C

NOTES, 1. PRODUCT SPEC, 108-5410

2. APPLICABLE CONTACT P/N

REC CONTACT: 177915-□ (φ20- 16AWG)
: 177914-□ (φ26- 22AWG)

3. MATING CONN, P/N

CAP HSG: 177909-□ (PANEL MOUNT)
TAB CONTACT: 177917-□ (φ20- 16AWG)
177916-□ (φ26- 22AWG)

4. APPLICABLE PLATE P/N: 177919-□

5. INSTRUCTION SHEET : 411-5638

ロックタイプII LOCK TYPE II	青 (BLUE)	6	3-177901-6
	自然色 (NATURAL)	6	3-177901-1

ロックタイプI LOCK TYPE I	黒 (BLACK)	6	1-177901-5
	青 (BLUE)	↑	↑ -6
	黄 (YELLOW)	↑	↑ -4
	赤 (RED)	↓	↓ -2
	自然色 (NATURAL)	6	177901-1

適合電線範囲 (WIRE RANGE)	絶縁外径 (INSULATION DIA.)	名称 (NAME)
mm ² (AWG -)	mmφ	AMP POWER DOUBLE LOCK CONN. 6極 3.96mmピッチ プラグハウジング (2列タイプ) AMP POWER DOUBLE LOCK CONN. 3.96mm PITCH PLUG HOUSING 6 Pos (DBL ROW)
材料 (MATERIAL)	仕上 (FINISH)	一般公差
6/6 NYLON (UL94V-0)	---	SIZE LOC 番号 (No.) A3 J C-177901
DR. 9. SEP '93 M. SUZUKI	DE. 9. SEP '93 M. SUZUKI	尺度 (SCALE) REV. SHEET 10以下: ±0.2 10以上 30以下: ±0.25 30以上 100以下: ±0.3 角 度: ±3°
R4 REVISED PER ECR-12-013854 A. Z F. M 02AUG12	R3 REVISED PER ECR-12-010818 A. Z F. M 14JUN12	R2 REVISED PER ECR-12-010382 A. Z F. M 07JUN12
R1 REVISED PER ECO-11-006140 RK HMR 01APR11	LTR 変更 (REVISION RECORD) DR CHK DATE	CHK. 9. SEP '93 M. SHINDO APP. 9. SEP '93 Y. KASHIWA

CUSTOMER DRAWING

単位: mm DIMENSIONS IN MM. DO NOT SCALE PRINT

PRINT DIST