

# SUBRACK EXPRESS

WHEN SUBRACKS ARE REQUIRED...FAST!



Unshielded Subrack



Shielded Subrack



multipacPRO™

## GET “EXPRESS” SERVICE ON YOUR SUBRACKS, AVAILABLE FOR SHIPPING IN AS FEW AS 15 DAYS

Subrack Express service provides rapid delivery turnarounds for solutions engineered to meet your design requirements—in a matter of days. Offering a combined total of over 600 items: base kits, parts and accessories, users can overcome design challenges by customizing subrack solutions to meet individual application requirements. These reliable subracks seamlessly integrate with racks and front panels, allowing quick, easy installation for mounting electronic components. With up to 15 units available at once, Subrack Express satisfies short lead times for prototype sample deliveries.

europacPRO™ modular subrack platform offers flexible solutions for systems that will use Euroboard based PCBs. Standard kits come in 3U and 6U sizes.

multipacPRO™ chassis is best suited for discrete components or applications that do not need modularity. The products offered in this program come in 1U and 2U sizes.

### KEY FEATURES

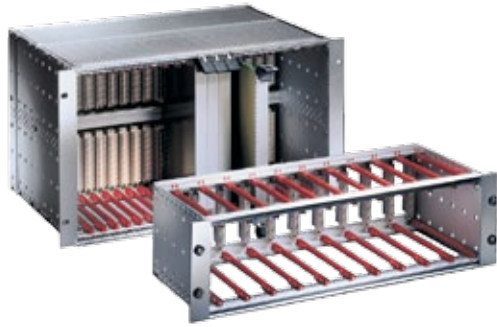
- **Rapid delivery turnarounds**—available for shipping in as few as 15 days
- **Broad range** of fully featured subrack kits
- **More than 600 base kits, parts accessories** for quick, custom solutions
- **EuropacPRO™ and multipacPRO™ chassis** for 1U, 2U, 3U and 6U systems

- **Shielded and unshielded** models to meet diverse design requirements
- **Diverse system compatibility**, supporting CompactPCI, VME64x, VME and VPX
- **Local and global** design and product support
- **Design and engineering technical assistance** (Pro-E, SDRS, Autocad and Solidworks)

### APPLICATIONS INCLUDE:

- Telecommunications
- Security and defense
- Test and measurement
- Transportation
- Medical
- Aerospace
- Industrial automation

# SUBRACK EXPRESS



europacPRO™

## SELECTING YOUR SOLUTION

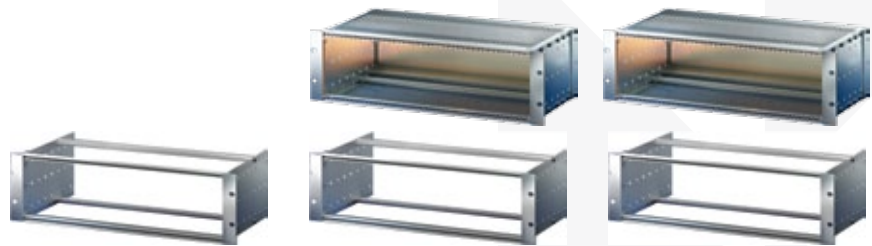
To identify correct europacPRO subrack kit identify following requirements:

1. EMC shielding requirement
2. Static load requirement
3. Shock and vibration requirement

Choose europacPRO flexible for 2 post rack installations

In addition to this fast, flexible service, Schroff offers extensive custom capabilities for subracks outside of Subrack Express to meet performance and aesthetics requirements. Customizable feature options include:

- Size
- Color
- Silk screening
- Configurations
- Back panels
- Power supplies
- Front panels



europacPRO light	europacPRO flexible	europacPRO heavy
Bracket is part of the side panel	Flexibility in positioning 19" mounting bracket for two post rack applications	19" bracket fixed to the side panel
Shielded	Shielded or unshielded	Shielded or unshielded
Up to 17 lbs/7.5 kg static load	Up to 24 lbs/11 kg static load	Up to 33 lbs/15 kg static load Up to 5G of shock and vibration

FOR MORE INFORMATION: [SCHROFF.US](http://SCHROFF.US)



### NORTH AMERICA

Minneapolis, MN  
Tel: +1.763.421.2240

Warwick, RI  
Tel: +1.401.732.3770

San Diego, CA  
Tel: +1.858.740.2400

Mexico, D.F.  
Tel: +52.55.5280.1449

Toronto, Canada  
Tel: +1.416.289.2770

### SOUTH AMERICA

São Paulo, S.P., Brazil  
Tel: +55.11.5184.2100

Boituva, Brazil  
Tel: +55.15.3363.9101

### EUROPE

Straubenhardt, Germany  
Tel: +49.7082.794.0

Betschdorf, France  
Tel: +33.3.88.90.64.90

Dzierżoniów, Poland  
Tel: +48.74.64.63.700

Hemel Hempstead, Great Britain  
Tel: +44.1442.24.04.71

Skarpnäck, Sweden  
Tel: +46.8.683.61.00

Pregnana Milanese, Italy  
Tel: +39.02.932.714.1

Moscow, Russia  
Tel: +7.495.730.52.53

### MIDDLE EAST & AFRICA

Dubai, United Arab Emirates  
Tel: +971.4.37.81.700

### ASIA

Shanghai, P.R. China  
Tel: +86.21.3211.4588

Qingdao, P.R. China  
Tel: +86.532.8771.6101

Bangalore, India  
Tel: +91.80.6715.2000

Singapore  
Tel: +65.679.52213

Shin-Yokohama, Japan  
Tel: +81.45.476.0271

## 19 INCH SUBRACK PARTS

### UNIVERSAL TOP AND BOTTOM COVERS FOR ENCLOSURES HOUSING 160, 220 AND 280MM PCBS

Part Number	Description
24560031	Top & bottom EMC covers 42HP 175MM 2PC
24560032	Top & bottom EMC covers 42HP 235MM 2PC
24560033	Top & bottom EMC covers 42HP 295MM 2PC
24560041	Top & bottom EMC covers 63HP 175MM 2PC
24560042	Top & bottom EMC covers 63HP 235MM 2PC
24560043	Top & bottom EMC covers 63HP 295MM 2PC
24560051	Top & bottom EMC covers 84HP 175MM 2PC
24560052	Top & bottom EMC covers 84HP 235MM 2PC
24560053	Top & bottom EMC covers 84HP 295MM 2PC
24560054	Top & bottom EMC covers 84HP 355MM 2PC
24560055	Top & bottom EMC covers 84HP 415MM 2PC
24560056	Top & bottom EMC covers 84HP 475MM 2PC
24560061	Top & bottom EMC covers 42HP 275MM 2PC
24560062	Top & bottom EMC covers 63HP 275MM 2PC
24560063	Top & bottom EMC covers 84HP 275MM 2PC
24560064	Top & bottom EMC covers 42HP 175MM 2PC
24560065	Top & bottom EMC covers 42HP 235MM 2PC
24560066	Top & bottom EMC covers 42HP 295MM 2PC
24560071	Top & bottom EMC covers 63HP 175MM 2PC
24560072	Top & bottom EMC covers 63HP 235MM 2PC
24560073	Top & bottom EMC covers 63HP 295MM 2PC
24560078	Top & bottom EMC covers 84HP 175MM 2PC
24560079	Top & bottom EMC covers 84HP 235MM 2PC
24560080	Top & bottom EMC covers 84HP 295MM 2PC
24560081	Top & bottom EMC covers 84HP 355MM 2PC
24560082	Top & bottom EMC covers 84HP 415MM 2PC
24560083	Top & bottom EMC covers 84HP 475MM 2PC
24579090	Top & bottom EMC cover 42HP 277.75MM 2PCS
24579092	Top & bottom EMC cover 84HP 277.75MM 2PCS

### 19" BRACKETS FOR SUBRACK TO ENCLOSURE/CABINET/RACK INTEGRATION

Part Number	Description
24560197	3U 19" bracket (for stainless steel EMC gasket) without handle holes 2PCS
24560198	3U 19" bracket (for stainless steel EMC gasket) with handle holes 2PCS
24560199	3U 19" bracket (for stainless steel EMC gasket) for flexible side panels 2PCS
24560297	4U 19" bracket (for stainless steel EMC gasket) without handle holes 2PCS
24560298	4U 19" bracket (for stainless steel EMC gasket) with handle holes 2PCS
24560299	4U 19" bracket (for stainless steel EMC gasket) for flexible side panels 2PCS

24560497	6U 19" bracket (for stainless steel EMC gasket) without handle holes 2PCS
24560498	6U 19" bracket (for stainless steel EMC gasket) with handle holes 2PCS
24560499	6U 19" bracket (for stainless steel EMC gasket) for flexible side panels 2PCS
24560797	9U 19" bracket (for stainless steel EMC gasket) without handle holes 2PCS
24560798	9U 19" bracket (for stainless steel EMC gasket) with handle holes 2PCS
24560799	9U 19" bracket (for stainless steel EMC gasket) for flexible side panels 2PCS
24564197	3U 19" bracket (for textile EMC gasket) without handle holes 2PCS
24564198	3U 19" bracket (for textile EMC gasket) with handle holes 2PCS
24564297	4U 19" bracket (for textile EMC gasket) without handle holes 2PCS
24564298	4U 19" bracket (for textile EMC gasket) with handle holes 2PCS
24564497	6U 19" bracket (for textile EMC gasket) without handle holes 2PCS
24564498	6U 19" bracket (for textile EMC gasket) with handle holes 2PCS
24564797	9U 19" bracket (for textile EMC gasket) without handle holes 2PCS
24564798	9U 19" bracket (for textile EMC gasket) with handle holes 2PCS

#### WALL MOUNTING BRACKETS

Part Number	Description
24562197	3U wall mounting brackets
24562497	6U wall mounting brackets

#### INSULATION STRIPS FOR BACK PLANE MOUNTINGS

Part Number	Description
24560820	Insulation strip for rear horizontal rails 20HP 10PCS
24560828	Insulation strip for rear horizontal rails 28HP 10PCS
24560840	Insulation strip for rear horizontal rails 40HP 10PCS
24560842	Insulation strip for rear horizontal rails 42HP 10PCS
24560863	Insulation strip for rear horizontal rails 63HP 10PCS
24560884	Insulation strip for rear horizontal rails 84HP 10PCS

#### TOP AND BOTTOM PERFORATED COVERS

Part Number	Description
24561031	Top and bottom perforated covers 42HP 160MM 2PCS
24561041	Top and bottom perforated covers 63HP 160MM 2PCS
24561051	Top and bottom perforated covers 84HP 160MM 2PCS
24561052	Top and bottom perforated covers 84HP 220MM 2PCS

#### EMC REAR CORNERS

Part Number	Description
24561198	Rear corner for stainless steel gaskets 3U 2PCS
24561298	Rear corner for stainless steel gaskets 4U 2PCS
24561498	Rear corner for stainless steel gaskets 6U 2PCS
24561798	Rear corner for stainless steel gaskets 9U 2PCS

24564199	Rear corner for textile gaskets 3U 2PCS
24564299	Rear corner for textile gaskets 4U 2PCS
24564499	Rear corner for textile gaskets 6U 2PCS
24564799	Rear corner for textile gaskets 9U 2PCS

#### PERFORATED INSERT STRIPS

Part Number	Description
30845189	Perforated Insert Strip 20HP
30845197	Perforated Insert Strip 28HP
30845209	Perforated Insert Strip 40HP
30845211	Perforated Insert Strip 42HP
30845232	Perforated Insert Strip 63HP
30845253	Perforated Insert Strip 84HP
34565396	Perforated Insert Strip 196HP

#### HORIZONTAL RAILS

Part Number	Description
34561501	Horizontal rail for Rear I/O 1Meter
34561520	Horizontal rail for Rear I/O 20HP
34561528	Horizontal rail for Rear I/O 28HP
34561540	Horizontal rail for Rear I/O 40HP
34561542	Horizontal rail for Rear I/O 42HP
34561563	Horizontal rail for Rear I/O 63HP
34561584	Horizontal rail for Rear I/O 84HP
34561001	Horizontal rail Center 1MT ST
34561101	Horizontal rail Center 1MT RC
34561201	Horizontal rail Center 1MT WZ
34561020	Horizontal rail Center 20HP ST
34561028	Horizontal rail Center 28HP ST
34561040	Horizontal rail Center 40HP ST
34561042	Horizontal rail Center 42HP ST
34561063	Horizontal rail Center 63HP ST
34561084	Horizontal rail Center 84HP ST
34561120	Horizontal rail Center 20HP RC
34561220	Horizontal rail Center 20HP WZ
34561128	Horizontal rail Center 28HP RC
34561228	Horizontal rail Center 28HP WZ
34561140	Horizontal rail Center 40HP RC
34561240	Horizontal rail Center 40HP WZ
34561142	Horizontal rail Center 42HP RC
34561242	Horizontal rail Center 42HP WZ
34561163	Horizontal rail Center 63HP RC

<b>34561263</b>	Horizontal rail Center 63HP WZ
<b>34561184</b>	Horizontal rail Center 84HP RC
<b>34561284</b>	Horizontal rail Center 84HP WZ
<b>34560301</b>	Horizontal rail Front 1MT H LL
<b>34560201</b>	Horizontal rail Front 1MT H SL
<b>34560001</b>	Horizontal rail Front 1MT L NL
<b>34560101</b>	Horizontal rail Front 1MT L SL
<b>34560320</b>	Horizontal rail Front 20HP H LL
<b>34560220</b>	Horizontal rail Front 20HP H SL
<b>34560020</b>	Horizontal rail Front 20HP L NL
<b>34560120</b>	Horizontal rail Front 20HP L SL
<b>34560328</b>	Horizontal rail Front 28HP H LL
<b>34560228</b>	Horizontal rail Front 28HP H SL
<b>34560028</b>	Horizontal rail Front 28HP L NL
<b>34560128</b>	Horizontal rail Front 28HP L SL
<b>34560340</b>	Horizontal rail Front 40HP H LL
<b>34560240</b>	Horizontal rail Front 40HP H SL
<b>34560040</b>	Horizontal rail Front 40HP L NL
<b>34560140</b>	Horizontal rail Front 40HP L SL
<b>34560342</b>	Horizontal rail Front 42HP H LL
<b>34560242</b>	Horizontal rail Front 42HP H SL
<b>34560042</b>	Horizontal rail Front 42HP L NL
<b>34560142</b>	Horizontal rail Front 42HP L SL
<b>34560363</b>	Horizontal rail Front 63HP H LL
<b>34560263</b>	Horizontal rail Front 63HP H SL
<b>34560063</b>	Horizontal rail Front 63HP L NL
<b>34560163</b>	Horizontal rail Front 63HP L SL
<b>34560384</b>	Horizontal rail Front 84HP H LL
<b>34560284</b>	Horizontal rail Front 84HP H SL
<b>34560084</b>	Horizontal rail Front 84HP L NL
<b>34560184</b>	Horizontal rail Front 84HP L SL
<b>34560701</b>	Horizontal rail Rear 1MT H RC
<b>34560501</b>	Horizontal rail Rear 1MT H ST
<b>34560601</b>	Horizontal rail Rear 1MT L RC
<b>34560401</b>	Horizontal rail Rear 1MT L ST
<b>34560801</b>	Horizontal rail Rear 1MT L WZ
<b>34560720</b>	Horizontal rail Rear 20HP H RC
<b>34560520</b>	Horizontal rail Rear 20HP H ST
<b>34560920</b>	Horizontal rail Rear 20HP H WZ
<b>34560620</b>	Horizontal rail Rear 20HP L RC
<b>34560420</b>	Horizontal rail Rear 20HP L ST
<b>34560820</b>	Horizontal rail Rear 20HP L WZ

34560728	Horizontal rail Rear 28HP H RC
34560528	Horizontal rail Rear 28HP H ST
34560928	Horizontal rail Rear 28HP H WZ
34560628	Horizontal rail Rear 28HP L RC
34560428	Horizontal rail Rear 28HP L ST
34560828	Horizontal rail Rear 28HP L WZ
34560740	Horizontal rail Rear 40HP H RC
34560540	Horizontal rail Rear 40HP H ST
34560940	Horizontal rail Rear 40HP H WZ
34560640	Horizontal rail Rear 40HP L RC
34560440	Horizontal rail Rear 40HP L ST
34560840	Horizontal rail Rear 40HP L WZ
34560742	Horizontal rail Rear 42HP H RC
34560542	Horizontal rail Rear 42HP H ST
34560942	Horizontal rail Rear 42HP H WZ
34560642	Horizontal rail Rear 42HP L RC
34560442	Horizontal rail Rear 42HP L ST
34560842	Horizontal rail Rear 42HP L WZ
34560763	Horizontal rail Rear 63HP H RC
34560563	Horizontal rail Rear 63HP H ST
34560963	Horizontal rail Rear 63HP H WZ
34560663	Horizontal rail Rear 63HP L RC
34560463	Horizontal rail Rear 63HP L ST
34560863	Horizontal rail Rear 63HP L WZ
34560784	Horizontal rail Rear 84HP H RC
34560584	Horizontal rail Rear 84HP H ST
34560984	Horizontal rail Rear 84HP H WZ
34560684	Horizontal rail Rear 84HP L RC
34560484	Horizontal rail Rear 84HP L ST
34560884	Horizontal rail Rear 84HP L WZ

**MOUNTING PLATE**

Part Number	Description
34562745	Mounting plate 160MM 28HP
34562746	Mounting plate 160MM 42HP
34562747	Mounting plate 160MM 63HP
34562748	Mounting plate 160MM 84HP
34562749	Mounting plate 220MM 28HP
34562750	Mounting plate 220MM 42HP
34562751	Mounting plate 220MM 63HP
34562752	Mounting plate 220MM 84HP
34562753	Mounting plate 280MM 28HP

34562754	Mounting plate 280MM 42HP
34562755	Mounting plate 280MM 63HP
34562756	Mounting plate 280MM 84HP
34563001	Mounting plate 28HP 160MM
34563009	Mounting plate 28HP 220MM
34562757	Mounting plate 340MM 28HP
34562758	Mounting plate 340MM 42HP
34562759	Mounting plate 340MM 63HP
34562760	Mounting plate 340MM 84HP
34563002	Mounting plate 42HP 160MM
34563014	Mounting plate 42HP 220MM
34563003	Mounting plate 63HP 160MM
34563019	Mounting plate 63HP 220MM
34563004	Mounting plate 84HP 160MM
34563024	Mounting plate 84HP 220MM

#### REAR HOOD

Part Number	Description
34561750	Rear hood 3U 42HP
34561752	Rear hood 3U 84HP
34561763	Rear hood 6U 63HP
34561764	Rear hood 6U 84HP

#### SIDE PANELS

Part Number	Description
24564145	Side panel H 3U 175MM (Stainless steel EMC gasket) with out handle holes 2PC
24564147	Side panel H 3U 235MM (Stainless steel EMC gasket) with out handle holes 2PC
24564149	Side panel H 3U 295MM (Stainless steel EMC gasket) with out handle holes 2PC
24564151	Side panel H 3U 355MM (Stainless steel EMC gasket) with out handle holes 2PC
24564445	Side panel H 6U 175MM (Stainless steel EMC gasket) with out handle holes 2PC
24564447	Side panel H 6U 235MM (Stainless steel EMC gasket) with out handle holes 2PC
24564449	Side panel H 6U 295MM (Stainless steel EMC gasket) with out handle holes 2PC
24564451	Side panel H 6U 355MM (Stainless steel EMC gasket) with out handle holes 2PC
24566125	Side panel H 3U 175MM (Stainless steel EMC gasket) with out handle holes 2PC
24566127	Side panel H 3U 235MM (Stainless steel EMC gasket) with out handle holes 2PC
24566129	Side panel H 3U 295MM (Stainless steel EMC gasket) with out handle holes 2PC
24566131	Side panel H 3U 355MM (Stainless steel EMC gasket) with out handle holes 2PC
24566145	Side panel H 3U 175MM (Textile EMC gasket) with handle holes 2PC
24566147	Side panel H 3U 235MM (Textile EMC gasket) with handle holes 2PC
24566149	Side panel H 3U 295MM (Textile EMC gasket) with handle holes 2PC
24566151	Side panel H 3U 355MM (Textile EMC gasket) with handle holes 2PC
24566425	Side panel H 6U 175MM (Stainless steel EMC gasket) with out handle holes 2PC



<b>24566427</b>	Side panel H 6U 235MM (Stainless steel EMC gasket) with out handle holes 2PC
<b>24566429</b>	Side panel H 6U 295MM (Stainless steel EMC gasket) with out handle holes 2PC
<b>24566431</b>	Side panel H 6U 355MM (Stainless steel EMC gasket) with out handle holes 2PC
<b>24566445</b>	Side panel H 6U 175MM (Textile EMC gasket) with handle holes 2PCS
<b>24566447</b>	Side panel H 6U 235MM (Textile EMC gasket) with handle holes 2PC
<b>24566449</b>	Side panel H 6U 295MM (Textile EMC gasket) with handle holes 2PCS
<b>24566451</b>	Side panel H 6U 355MM (Textile EMC gasket) with handle holes 2PCS
<b>24567125</b>	Side panel H 3U 175MM (Stainless steel EMC gasket) with handle holes 2PC
<b>24567127</b>	Side panel H 3U 235MM (Stainless steel EMC gasket) with handle holes 2PC
<b>24567129</b>	Side panel H 3U 295MM (Stainless steel EMC gasket) with handle holes 2PC
<b>24567131</b>	Side panel H 3U 355MM (Stainless steel EMC gasket) with handle holes 2PC
<b>24567425</b>	Side panel H 6U 175MM (Stainless steel EMC gasket) with handle holes 2PC
<b>24567427</b>	Side panel H 6U 235MM (Stainless steel EMC gasket) with handle holes 2PC
<b>24567429</b>	Side panel H 6U 295MM (Stainless steel EMC gasket) with handle holes 2PC
<b>24567431</b>	Side panel H 6U 355MM (Stainless steel EMC gasket) with handle holes 2PC
<b>34560185</b>	Side panel F 3U 175MM
<b>34560187</b>	Side panel F 3U 235MM
<b>34560189</b>	Side panel F 3U 295MM
<b>34560191</b>	Side panel F 3U 355MM
<b>34560193</b>	Side panel F 3U 415MM
<b>34560195</b>	Side panel F 3U 475MM
<b>34560285</b>	Side panel F 4U 175MM
<b>34560287</b>	Side panel F 4U 235MM
<b>34560289</b>	Side panel F 4U 295MM
<b>34560291</b>	Side panel F 4U 355MM
<b>34560293</b>	Side panel F 4U 415MM
<b>34560295</b>	Side panel F 4U 475MM
<b>34560485</b>	Side panel F 6U 175MM
<b>34560487</b>	Side panel F 6U 235MM
<b>34560489</b>	Side panel F 6U 295MM
<b>34560491</b>	Side panel F 6U 355MM
<b>34560493</b>	Side panel F 6U 415MM
<b>34560495</b>	Side panel F 6U 475MM
<b>34560496</b>	Side panel F 6U 970MM
<b>34560785</b>	Side panel F 9U 175MM
<b>34560787</b>	Side panel F 9U 235MM
<b>34560789</b>	Side panel F 9U 295MM
<b>34560791</b>	Side panel F 9U 355MM
<b>34560793</b>	Side panel F 9U 415MM
<b>34561185</b>	Side panel L 3U 175MM
<b>34561187</b>	Side panel L 3U 235MM
<b>34561189</b>	Side panel L 3U 295MM

<b>34561485</b>	Side panel L 6U 175MM
<b>34561487</b>	Side panel L 6U 235MM
<b>34561489</b>	Side panel L 6U 295MM
<b>34579002</b>	Side panel F 3U 277.75MM
<b>34579012</b>	Side panel F 6U 277.75MM
<b>34579038</b>	Side panel F 6U 275MM
<b>34579300</b>	Side panel F 3U 275MM

#### L TYPE SIDE PLATES TRIM

Part Number	Description
<b>34561197</b>	3U trim for L type side plates (not EMC)
<b>34561497</b>	6U trim for L type side plates (not EMC)

#### INSULATION STRIPS FOR BACKPLANE MOUNTING

Part Number	Description
<b>30894444</b>	Insulation strip for backplane mounting 62HP GREY
<b>60817061</b>	Insulation strip for backplane mounting 84HP GREY

#### THEADED INSERTS

Part Number	Description
<b>34561320</b>	Threaded insert 20HP M2.5
<b>34561328</b>	Threaded insert 28HP M2.5
<b>34561340</b>	Threaded insert 40HP M2.5
<b>34561342</b>	Threaded insert 42HP M2.5
<b>34561363</b>	Threaded insert 63HP M2.5
<b>34561384</b>	Threaded insert 84HP M2.5
<b>34561484</b>	Threaded insert 84HP M3
<b>34565196</b>	Threaded insert 196HP M2.5

## 19 INCH SUBRACK KITS

### 28H SUBRACK KITS FOR WALL MOUNT ENVIRONMENT

Part Number	Description
24563107	Wall mount unshielded subrack 3U 28HP 205MM with top and bottom covers without rear panel for backplane
24563108	Wall mount unshielded subrack 3U 28HP 205MM with top and bottom covers with rear panel for backplane
24563109	Wall mount unshielded subrack 3U 28HP 205MM with top and bottom covers without rear panel for connectors
24563110	Wall mount unshielded subrack 3U 28HP 205MM with top and bottom covers with rear panel for connectors

### SUBRACK KITS

Part Number	Description
24563131	Subrack 3U 84HP 175D VME, IEEE1101.1 Light
24563132	Subrack 3U 84HP 235D VME, IEEE1101.1 Light
24563133	Subrack 3U 84HP 295D VME, IEEE1101.1 Light
24563134	Subrack 3U 84HP 355D VME, IEEE1101.1 Light
24563135	Subrack 3U 84HP 415D VME, IEEE1101.1 Light
24563136	Subrack 3U 84HP 475D VME, IEEE1101.1 Light
24563142	Subrack 3U 84HP 235D shielded VME, IEEE1101.1 Light
24563143	Subrack 3U 84HP 295D shielded VME, IEEE1101.1 Light
24563144	Subrack 3U 84HP 355D shielded VME, IEEE1101.1 Light
24563145	Subrack 3U 84HP 415D shielded VME, IEEE1101.1 Light
24563146	Subrack 3U 84HP 475D shielded VME, IEEE1101.1 Light
24563152	Subrack 3U 84HP 235D shielded VME64x, cPCI, VPX, VXS, IEEE1101.10/11
24563157	Subrack 3U 84HP 275D shielded VME64x, cPCI, VPX, VXS, IEEE1101.10/11
24563161	Subrack 3U 84HP 175D VME, IEEE1101.1 Heavy
24563162	Subrack 3U 84HP 235D VME, IEEE1101.1 Heavy
24563163	Subrack 3U 84HP 295D VME, IEEE1101.1 Heavy
24563164	Subrack 3U 84HP 355D VME, IEEE1101.1 Heavy
24563172	Subrack 3U 84HP 235D shielded VME, IEEE1101.1 Heavy
24563173	Subrack 3U 84HP 295D shielded VME, IEEE1101.1 Heavy
24563174	Subrack 3U 84HP 355D shielded VME, IEEE1101.1 Heavy
24563191	Subrack 3U 84HP 175D DIN41612 Light
24563192	Subrack 3U 84HP 235D DIN41612 Light
24563193	Subrack 3U 84HP 295D DIN41612 Light
24563194	Subrack 3U 84HP 355D DIN41612 Light
24563431	Subrack 6U 84HP 175D VME, IEEE1101.1 Light
24563432	Subrack 6U 84HP 235D VME, IEEE1101.1 Light
24563433	Subrack 6U 84HP 295D VME, IEEE1101.1 Light
24563434	Subrack 6U 84HP 355D VME, IEEE1101.1 Light

24563435	Subrack 6U 84HP 415D VME, IEEE1101.1 Light
24563436	Subrack 6U 84HP 475D VME, IEEE1101.1 Light
24563442	Subrack 6U 84HP 235D shielded VME, IEEE1101.1 Light
24563443	Subrack 6U 84HP 295D shielded VME, IEEE1101.1 Light
24563444	Subrack 6U 84HP 355D shielded VME, IEEE1101.1 Light
24563445	Subrack 6U 84HP 415D shielded VME, IEEE1101.1 Light
24563446	Subrack 6U 84HP 475D shielded VME, IEEE1101.1 Light
24563452	Subrack 6U 84HP 235D shielded VME64x, cPCI, VPX, VXS, IEEE1101.10/11
24563457	Subrack 6U 84HP 275D shielded VME64x, cPCI, VPX, VXS, IEEE1101.10/11
24563461	Subrack 6U 84HP 175D VME, IEEE1101.1 Heavy
24563462	Subrack 6U 84HP 235D VME, IEEE1101.1 Heavy
24563463	Subrack 6U 84HP 295D VME, IEEE1101.1 Heavy
24563464	Subrack 6U 84HP 355D VME, IEEE1101.1 Heavy
24563472	Subrack 6U 84HP 235D shielded VME, IEEE1101.1 Heavy
24563473	Subrack 6U 84HP 295D shielded VME, IEEE1101.1 Heavy
24563474	Subrack 6U 84HP 355D shielded VME, IEEE1101.1 Heavy
24563491	Subrack 6U 84HP 175D DIN41612 Light
24563492	Subrack 6U 84HP 235D DIN41612 Light
24563493	Subrack 6U 84HP 295D DIN41612 Light
24563494	Subrack 6U 84HP 355D DIN41612 Light

#### SUBRACK KITS WITH HANDLES

Part Number	Description
24567149	Rugged Subrack 3U 84HP 295MM with Handles
24567449	Rugged Subrack 6U 84HP 295MM with Handles
24567161	Subrack 3U 84HP 175D VME, IEEE1101.1 Heavy with Handles
24567162	Subrack 3U 84HP 235D VME, IEEE1101.1 Heavy with Handles
24567163	Subrack 3U 84HP 295D VME, IEEE1101.1 Heavy with Handles
24567164	Subrack 3U 84HP 355D VME, IEEE1101.1 Heavy with Handles
24567172	Subrack 3U 84HP 235D shielded VME, IEEE1101.1 Heavy with Handles
24567173	Subrack 3U 84HP 295D shielded VME, IEEE1101.1 Heavy with Handles
24567174	Subrack 3U 84HP 355D shielded VME, IEEE1101.1 Heavy with Handles
24567461	Subrack 6U 84HP 175MM VME, IEEE1101.1 Heavy with Handles
24567462	Subrack 6U 84HP 235MM VME, IEEE1101.1 Heavy with Handles
24567463	Subrack 6U 84HP 295MM VME, IEEE1101.1 Heavy with Handles
24567464	Subrack 6U 84HP 355MM VME, IEEE1101.1 Heavy with Handles
24567472	Subrack 6U 84HP 235MM shielded VME, IEEE1101.1 Heavy with Handles
24567473	Subrack 6U 84HP 295MM shielded VME, IEEE1101.1 Heavy with Handles
24567474	Subrack 6U 84HP 355MM shielded VME, IEEE1101.1 Heavy with Handles

**UNSHIELDED SUBRACK KITS (THIS VERSION CAN NOT BE SHIELDED WITH ACCESSORIES)**

Part Number	Description
<b>24564131</b>	Subrack 3U 84HP 175D VME, IEEE1101.1 Light Unshilded
<b>24564132</b>	Subrack 3U 84HP 235D VME, IEEE1101.1 Light Unshilded
<b>24564133</b>	Subrack 3U 84HP 295D VME, IEEE1101.1 Light Unshilded
<b>24564431</b>	Subrack 6U 84HP 175D VME, IEEE1101.1 Light Unshilded
<b>24564432</b>	Subrack 6U 84HP 235D VME, IEEE1101.1 Light Unshilded
<b>24564433</b>	Subrack 6U 84HP 295D VME, IEEE1101.1 Light Unshilded

## 19 INCH CHASSIS

### COMPLETE STEEL 19" CHASSIS WITH TOP AND BOTTOM COVERS AND ALUMINUM FRONT PANEL

Part Number	Description
20860120	1U 84HP 220MM
20860121	1U 84HP 280MM
20860122	1U 84HP 340MM
20860126	2U 84HP 280MM
20860127	2U 84HP 340MM

### COMPLETE ALUMINUM 19" CHASSIS WITH TOP AND BOTTOM COVERS AND ALUMINUM FRONT PANEL

Part Number	Description
20860601	1U 84HP 220MM
20860602	1U 84HP 280MM
20860605	2U 84HP 280MM
20860606	2U 84HP 340MM
20860607	3U 84HP 280MM
20860608	3U 84HP 340MM
20860609	3U 84HP 400MM
20860612	4U 84HP 340MM
20860613	4U 84HP 400MM
20860614	4U 84HP 460MM
20860615	5U 84HP 460MM

### COMPLETE ALUMINUM 19" CHASSIS W/PERFORATED TOP AND BOTTOM COVERS, ALUMINUM FRONT PANEL

Part Number	Description
20860621	1U 84HP 220MM
20860622	1U 84HP 280MM
20860625	2U 84HP 280MM
20860626	2U 84HP 340MM
20860627	3U 84HP 280MM
20860628	3U 84HP 340MM
20860629	3U 84HP 400MM
20860632	4U 84HP 340MM
20860633	4U 84HP 400MM
20860634	4U 84HP 460MM
20860635	5U 84HP 460MM

### CHASSIS FRAME

Part Number	Description
20860201	Chassis Frame 1U 220MM (requires top and bottom covers)
20860202	Chassis Frame 1U 280MM (requires top and bottom covers)

20860203	Chassis Frame 1U 340MM (requires top and bottom covers)
20860210	Chassis Frame 2U 220MM (requires top and bottom covers)
20860211	Chassis Frame 2U 280MM (requires top and bottom covers)
20860212	Chassis Frame 2U 340MM (requires top and bottom covers)
20860219	Chassis Frame 3U 280MM (requires top and bottom covers)
20860220	Chassis Frame 3U 340MM (requires top and bottom covers)
20860221	Chassis Frame 3U 400MM (requires top and bottom covers)
20860222	Chassis Frame 3U 460MM (requires top and bottom covers)
20860228	Chassis Frame 4U 280MM (requires top and bottom covers)
20860229	Chassis Frame 4U 340MM (requires top and bottom covers)
20860230	Chassis Frame 4U 400MM (requires top and bottom covers)
20860231	Chassis Frame 4U 460MM (requires top and bottom covers)
20860240	Chassis Frame 5U 460MM (requires top and bottom covers)

#### TOP AND BOTTOM COVERS (TO BE USED WITH CHASSIS FRAMES)

Part Number	Description
30860501	Top & Bottom covers 220MM
30860502	Top & Bottom covers 280MM
30860503	Top & Bottom covers 340MM
30860504	Top & Bottom covers 400MM
30860505	Top & Bottom covers 460MM
30860510	Top & Bottom covers 220MM perforated
30860511	Top & Bottom covers 280MM perforated
30860512	Top & Bottom covers 340MM perforated
30860513	Top & Bottom covers 400MM perforated
30860514	Top & Bottom covers 460MM perforated
30860519	Top & Bottom covers 220MM for horizontal PCB mounting
30860520	Top & Bottom covers 280MM for horizontal PCB mounting
30860521	Top & Bottom covers 340MM for horizontal PCB mounting

#### ACCESSORIES

Part Number	Description
20860131	Telescopic slide
20860130	EMC gasket kit
20860108	Mounting Plate 210MM 84HP
20860109	Mounting Plate 270MM 84HP
20860110	Mounting Plate 330MM 84HP
20860111	Mounting Plate 390MM 84HP
20860107	Mounting Plate 150MM 84HP
20860256	Front handle 1U (2pcs)
20860257	Front handle 2U (2pcs)
20860258	Front handle 3U (2pcs)

<b>20860259</b>	Front handle 4U (2pcs)
<b>20860260</b>	Front handle 5U (2pcs)
<b>20860115</b>	1U high EN60603 connector holders for Horizontal PCB mounting. Use with 30860-519, 520 & 521 top & bottom covers
<b>20860116</b>	1U high insulated backplane holders Horizontal PCB mounting. Use with 30860-519, 520 & 521 top & bottom covers
<b>20860117</b>	2U high EN60603 connector holders Horizontal PCB mounting. Use with 30860-519, 520 & 521 top & bottom covers
<b>20860118</b>	2U high insulated backplane holders Horizontal PCB mounting. Use with 30860-519, 520 & 521 top & bottom covers

**KEYBOARD CHASSIS**

Part Number	Description
<b>10822009</b>	19"Keyboard chassis 2U 240MM



## 19 INCH SUBRACK ACCESSORIES

### GUIDE RAILS

Part Number	Description
24560351	Guide rail 160MM 10PCS
24560353	Guide rail 220MM 10PCS
24560355	Guide rail IEEE 70MM RED 10PC
24560356	Guide rail IEEE 160MM RED 10X
24560358	Guide rail IEEE 160MM 10PCS
24560359	Guide rail IEEE 160MM 10PCS
24560360	Guide rail IEEE 70MM GREY 10PC
24560361	Guide rail 4.4"160MM 10PCS
24560362	Guide rail 4.4"220MM 10PCS
24560373	Guide rail 160MM RED 10PCS
24560374	Guide rail 220MM RED 10PCS
24560375	Guide rail 280MM RED 10PCS
24560376	Guide rail 340MM UNI.2MM 10PC
24560379	Guide rail 280MM UNI.2MM 10PC
24560380	Guide rail 340MM UNI.2MM 10PC
24561330	Guide rail (with coding capability) 220MM 10PC
24561331	Guide rail (with coding capability) 280MM 10PC
24561332	Guide rail (with coding capability) 340MM 10PC
24561340	Guide rail (with coding capability) 220MM 10PC
24561341	Guide rail 280MM IEEE 2.5 10PC
24561342	Guide rail 340MM IEEE 2.5 10PC
34560891	Guide rail Extruded Aluminum middle for 160MM PCBs 95MM long
34560892	Guide rail Extruded Aluminum middle 220MM 155MM
34560893	Guide rail Extruded Aluminum middle 280MM 215MM
34560894	Guide rail PROFILE 340.0MM
34560900	Guide rail Extruded Aluminum 1Meter
34562881	Guide rail Extruded Aluminum 160MM 2.0NB
34562882	Guide rail Extruded Aluminum 220MM 2.0NB
34562883	Guide rail Extruded Aluminum 280MM 2.0NB
34562884	Guide rail Extruded Aluminum 340MM 2.0NB
34562885	Guide rail Extruded Aluminum 400MM 2.0NB
34564881	Guide rail 160MM Extruded Aluminum 2.5NB
34564882	Guide rail 220MM Extruded Aluminum 2.5NB
34564883	Guide rail 280MM Extruded Aluminum 2.5NB
34564884	Guide rail 340MM Extruded Aluminum 2.5NB
34564885	Guide rail 400MM Extruded Aluminum 2.5NB
34564891	Guide rail PROFILE F.160MM
34564892	Guide rail PROFILE F.220MM

34564893	Guide rail PROFILE F.280MM
34564900	Guide rail PROFILE 1000MM
34579230	Guide rail ST 70MM RED
34579231	Guide rail ST 70MM GREY
64560001	Guide rail 160MM 2MM RED E/PRO
64560002	Guide rail 220MM 2MM RED
64560005	Guide rail 160MM 2MM RED ACCESS
64560006	Guide rail 220MM 2MM RED ACCESS
64560055	Guide rail 160MM GREY
64560071	Guide rail IEEE OFFSET 160MM
64560072	Guide rail IEEE OFFSET 220MM
64560074	Guide rail RED 160MM INT(1PR)
64560075	Guide rail RED 220MM INT(1PR)
64560076	Guide rail 160MM HEAVY DUTY
64560078	Guide rail 220MM HEAVY DUTY
64560080	Guide rail 280MM HEAVY DUTY
64560082	Guide rail 100MM HEAVY DUTY
64560085	Guide rail KEY/COMMING 70MM RED
64560086	Guide rail KEY/COMMING 70MM GY
64560089	Guide rail KEY/COMMING 160MM R
64560090	Guide rail KEY/COMMING 160MM GY
64560091	Guide rail KEY/COMMING 220MM R
64560092	Guide rail KEY/COMM.220MM G/Y
64560096	Guide rail 160MM 2.5 RED ST
64560098	Guide rail 220MM 2.5 RED ST
64560143	Guide rail 160MM 4.4 E/PRO
64560144	Guide rail 220MM 4.4 E/PRO
64560145	Guide rail 160MM 4.4 E/PRO
64560146	Guide rail 220MM 4.4 E/PRO
64560164	Guide rail GREY160MM INT(1PR)
64560166	Guide rail 220MM ACCESSOR.GREY

#### CARD GUIDE ACCESSORIES

Part Number	Description
24560255	ESD clip 50PC
24560256	ESD clip for IEEE1101.1 card guides 50PCS
24560378	Front panel accessory Board Extraction Handle C 10PCS
24560381	PCB retainer 10PCS
24560377	PCB board retainer 10PCS
64560057	Card guide end pieces for aluminum extrusions (4.4" PCBs) 2MM grove 1PAIR
64560008	Card guide end pieces for aluminum extrusions (to be used with accessories) 2MM grove 1PAIR

<b>64560004</b>	Card guide end pieces for aluminum extrusions 2MM grove 1PAIR
<b>34579235</b>	VME to cPCI VME64x card guide adapter, bottom GREY
<b>34579234</b>	VME to cPCI VME64x card guide adapter, bottom RED
<b>34579233</b>	VME to cPCI VME64x card guide adapter, top GREY
<b>34579232</b>	VME to cPCI VME64x card guide adapter, top RED

#### SPLITTING KITS

Part Number	Description
<b>24562420</b>	Splitting kit 6U/3U 20HP
<b>24562440</b>	Splitting kit 6U/3U 40HP
<b>24562442</b>	Splitting kit 6U/3U 42HP
<b>24562463</b>	Splitting kit 6U/3U 63HP
<b>24562484</b>	Splitting kit 6U/3U 84HP

#### TELESCOPIC SLIDE PARTS FOR SUBRACK

Part Number	Description
<b>24562453</b>	Telescopic slides 175MM
<b>24562454</b>	Telescopic slides 235MM
<b>24562455</b>	Telescopic slides 295MM
<b>24562456</b>	Telescopic slides 355MM
<b>24562457</b>	Telescopic slides 415MM
<b>24562458</b>	Telescopic slides 475MM

#### TELESCOPIC SLIDE PARTS FOR CABINET

Part Number	Description
<b>24562460</b>	C-PROFIL 500D MINIRACK 2PC
<b>24562461</b>	C-PROFIL 600D MINIRACK 2PC
<b>24562462</b>	C-PROFIL 780D MINIRACK 2PC
<b>24562464</b>	C-PROFIL 600D VARISTAR 2PC
<b>24562466</b>	C-PROFIL 800D VARISTAR 2PC
<b>24562467</b>	C-PROFIL 900D VARISTAR 2PC
<b>24562468</b>	C-PROFIL 1000D VARISTAR 2PC
<b>24562472</b>	C-PROFIL 1100D VARISTAR 2PC
<b>24562473</b>	C-PROFIL 1200D VARISTAR 2PC