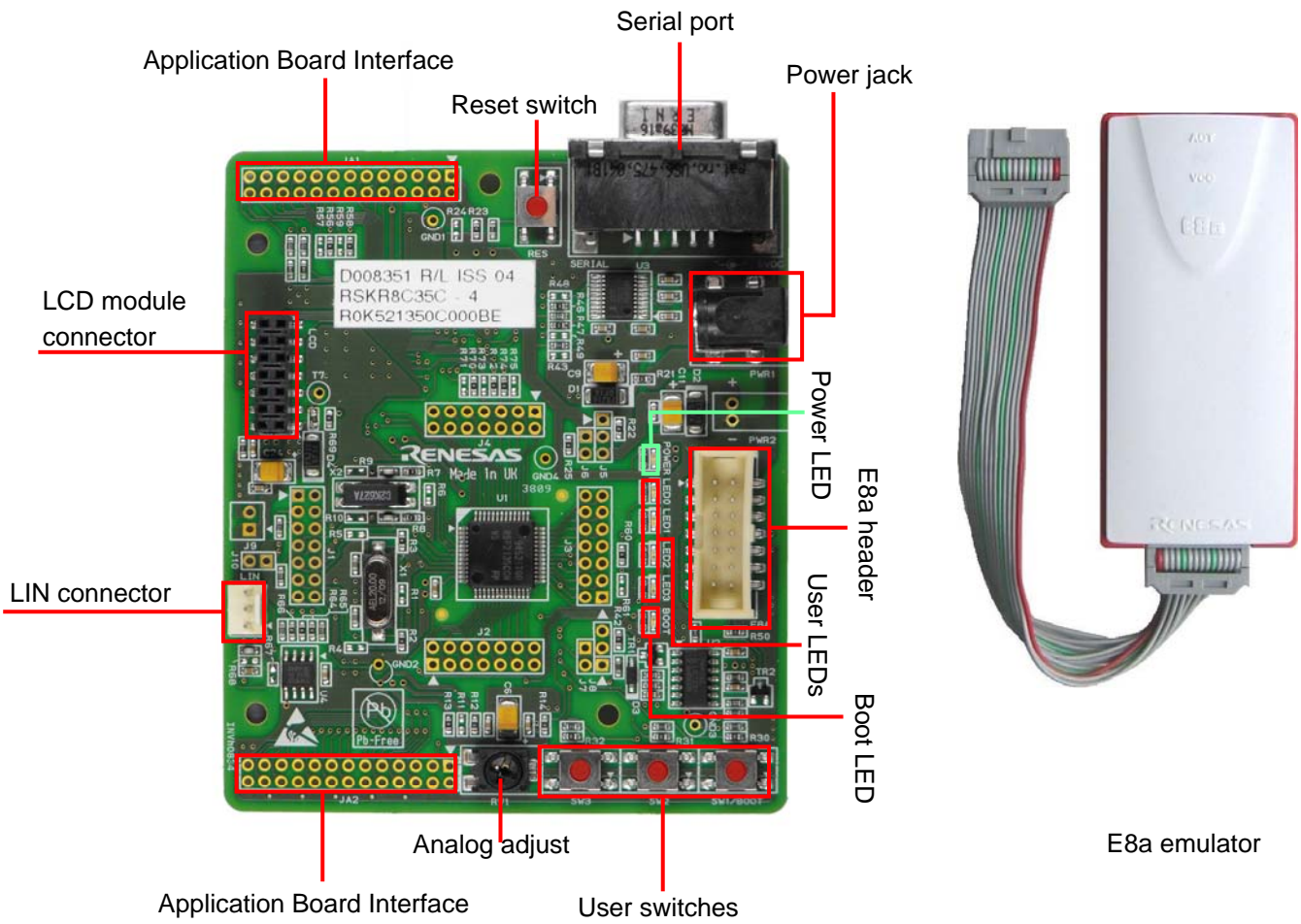
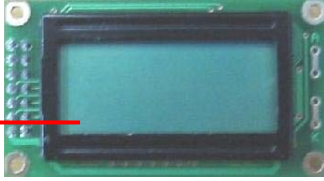


# Quick Start

# Renesas Starter Kit for R8C/35C

LCD module



## 1. Installation

**Do not connect the E8a emulator hardware until the software support has been installed.**

1. Insert the CD into your computer's CD-ROM drive. The CD should automatically run the installation program. If the installer does not start, browse to the CD root folder and double click on "setup.exe".
2. Windows™ users may see "User Account Control" dialog box. If applicable enter the administrator password and click <OK>.
3. The installer will ask you which language is to be used, please choose the appropriate one and click <OK>.
4. On the first screen of the installer proper, click <Next>.
5. The License Agreement will be shown, read and click <Yes>.
6. The next screen asks you to pick the world region – please select and click <Next>.
7. The destination folders are specified on the next screens. It is recommended to accept the default settings. Click <Next> to continue.
8. Click <Next> on all screens until the installation process commences.
9. After the completion of successful installation, click <Finish>.

## 2. Connection

10. Fit the LCD module to the LCD connector on the board, so it lies above J4. Ensure all the pins of the connector are correctly inserted in the socket.
11. Now connect the E8a emulator to E8a header on the board using the ribbon cable.
12. Connect the E8a emulator to a spare USB port.
13. The "Found New Hardware" Wizard will appear. Please follow the steps below to install the drivers. Note that administrator privileges are required for a Windows™ 2000/XP/Vista machine.

### **Windows™ 2000/XP**

- a. Select option 'No, not this time' in "Found New Hardware" Wizard dialog, and click <Next> button.
- b. Verify the "Recommended" option is selected and click <Next>.
- c. If using XP, go to step e; otherwise click <Next>.
- d. Click <Next> to install the driver.
- e. Click <Finish> to close the wizard.

### **Windows™ Vista**

- a. Select "Locate and install driver software (recommended)".
- b. "User Account Control" dialog box will appear. If applicable, enter administrator password and click <OK>.
- c. Driver installation will start. After couple of minutes "Windows security" dialog box will appear, select "install this driver software anyway".
- d. "Device driver software installed successfully" pop-up will appear in the windows toolbar and installation will complete.

*Note: The Windows™ driver signing dialog may be displayed. Please accept the driver to continue.*

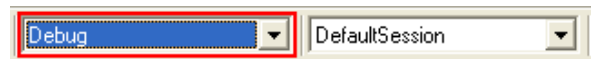
### 3. High-performance Embedded Workshop Workspace

High-performance Embedded Workshop integrates various tools such as compiler, assembler, debugger and editor into a common graphical user interface. To learn more on how to use High-performance Embedded Workshop, open the High-performance Embedded Workshop manual installed on your computer (Start Menu > All Programs > Renesas > High-performance Embedded Workshop > Manual Navigator).

14. Launch High-performance Embedded Workshop from the Start Menu. (Start Menu > All Programs > Renesas > High-performance Embedded Workshop > High-performance Embedded Workshop)
15. In the “Welcome” dialog box: Verify “Create New Workspace” is selected. Click <OK>.
16. In the “New Project Workspace” dialog box: Set the “CPU Family” to “M16C”, and verify the “Tool chain” is set to “Renesas M16C Standard”. Select “RSKR8C35C” from the left hand pane.
17. Enter a name for the workspace. The project name will be automatically completed with the Workspace name. You can change this name to “Tutorial” if required. Click <OK>.
18. On the “RSKR8C35C- Step 1” window: Select “Tutorial” and click <Next>.
19. On the “RSKR8C35C- Step 2” window: Click <Finish>.
20. On the Project Generator Information window: Click <OK>.

The project that is created has two configurations. The Release configuration can be used for the final release code version. The Debug configuration allows modifications to the configuration for debugging.

21. Select the Debug build configuration in the left hand drop down list on the toolbar.



22. Click on the “Build” icon to compile, assemble and link the project.

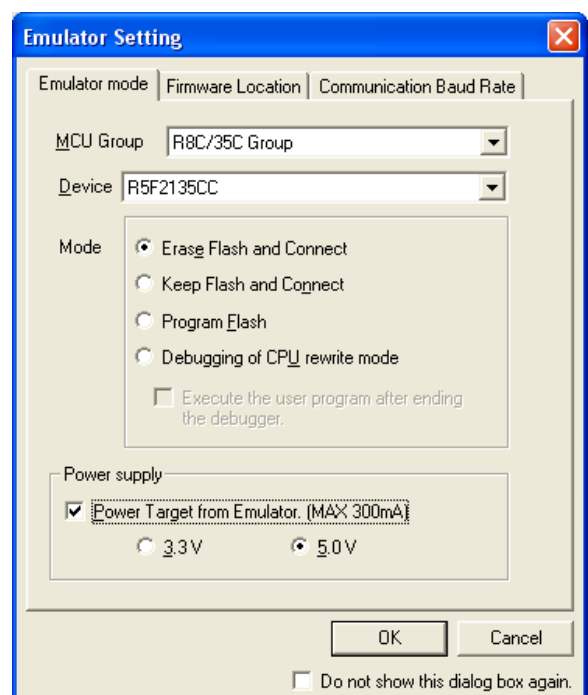


### 4. Programming and Debug

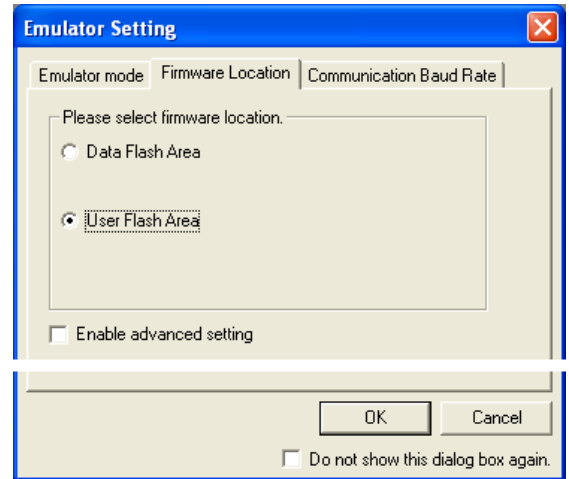
23. Ensure the “SessionR8C\_E8a\_SYSTEM” session in the right hand drop down list on the toolbar is selected.



24. Click the <Connect> button on the debug toolbar.
25. Select the correct MCU group (R8C/35C Group illustrated).
26. Select the correct device (R5F2135CC illustrated).
27. Select “Erase Flash and Connect”.
28. If the E8a is to provide power to the CPU board, select “Power Target from Emulator” and choose the “5.0V” option.

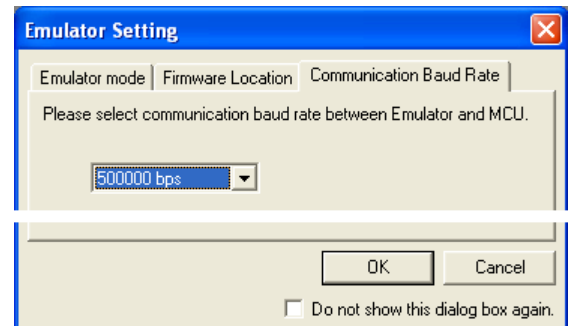


29. Choose "User Flash Area" in 'Firmware Location' tab.



30. Choose communication baud rate "500000bps" in 'Communication Baud Rate' tab.

31. Click <OK>.

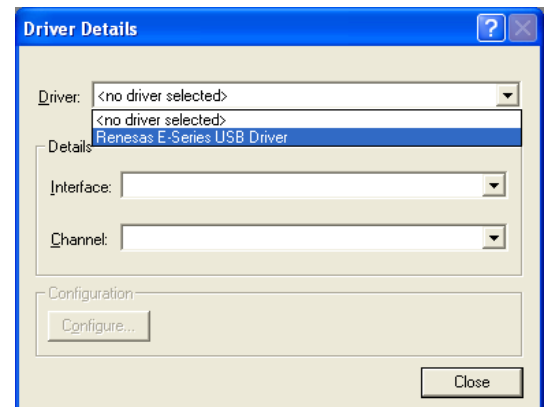


If this isn't the first time you have used the E8a emulator with this Renesas Starter Kit, please skip to step 36.

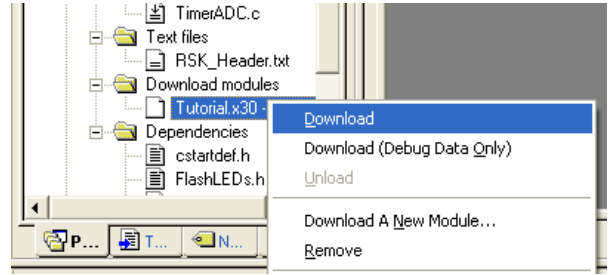
#### First use of the E8a emulator

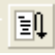
32. The 'Please choose driver' dialog will be shown. Click <OK>.
33. The 'Driver Details' dialog will be shown, please select "Renesas E-Series USB Driver" as illustrated. The 'interface' and 'Channel' items will be automatically populated. Click <Close>.
34. The Firmware setup dialog will be shown warning you not to disconnect the USB cable until the firmware download is complete. Click <OK>.
35. The firmware will be downloaded to the E8a emulator; this will take a few moments.


**Please do not disconnect the E8a from the host during download, doing so is likely to damage the E8a emulator.**



36. Right click on the download module listed in the left hand pane and select "Download".  
The code will be downloaded to the microcontroller. This may take several seconds.



37. Click the <Reset Go> button.   
The code will run and you will see the LEDs flash on the board.

38. Click the <Stop> button.   
The code will stop and the source code will be opened at the current program counter.

## 5. Next Step

After you have completed this quick start procedure, please review the tutorial code and sample code that came with the kit. You can add projects to the current workspace by selecting (Project > Insert Project) from the main menu. The tutorials will help you understand the device and development process using Renesas Development Tools. The Hardware manual supplied with this kit is current at the time of publication. Please check for any updates to the device manual from the Renesas website at: [www.renesas.com/renesas\\_starter\\_kits](http://www.renesas.com/renesas_starter_kits)

## 6. Renesas Compiler

The version of the compiler provided with this kit is fully functional but time limited. You have 60 days to evaluate the full product before the compiler will limit the code linker to 64k bytes. Full licensed compiler versions are available from your Renesas supplier.

## 7. Support

Online technical support and information is available at: [www.renesas.com/renesas\\_starter\\_kits](http://www.renesas.com/renesas_starter_kits)

Technical Contact Details

America: [techsupport.america@renesas.com](mailto:techsupport.america@renesas.com)

Europe: [tools.support.eu@renesas.com](mailto:tools.support.eu@renesas.com)

Japan: [csc@renesas.com](mailto:csc@renesas.com)

**Note on Autoupdate:** The Autoupdater is configured to automatically add itself to the Startup folder in the Windows™ Start Menu and use the registry defaults for access to the web. After restarting the machine the Icon will appear in the System Tray next to the clock. To change the settings or access Autoupdate, simply right-click on the icon and use the menu that appears.

© 2010 Renesas Electronics Europe Ltd. All rights reserved.  
© 2010 Renesas Electronics Corporation. All rights reserved.  
© 2010 Renesas Solutions Corporation. All rights reserved.