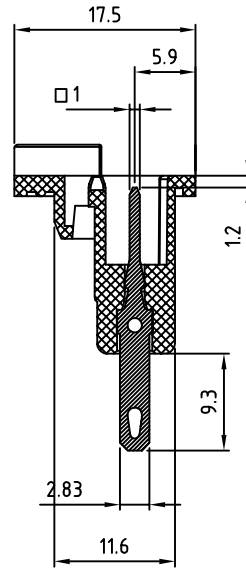
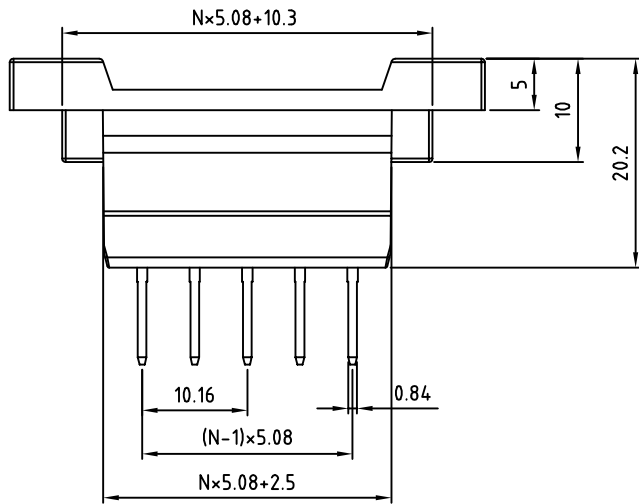
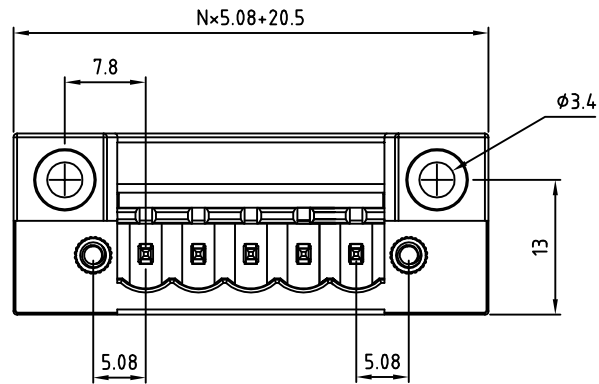
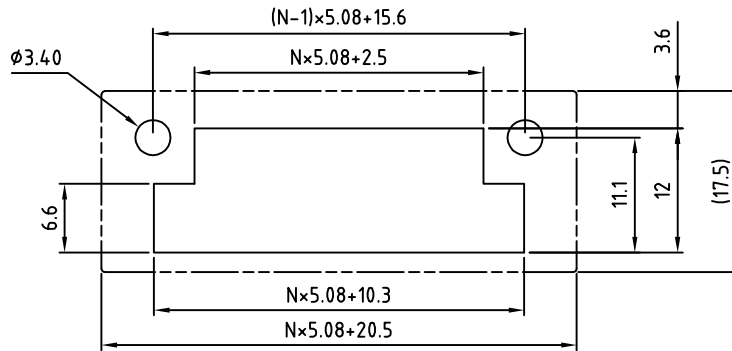


SIGN	DATE	DESCRIPTION	APPROVER
THIS IS CAD DRAWING, DO NOT REVISE MANUALLY!!!			



N=NUMBER OF CONTACTS

Cutout dimensions



**Material**

- Solder Pin: Brass with Tin plated.
- Flange screw nut: brass M2.5
- Insulator (housing): Thermoplastic(UL94V-0)

**Electrical**

- Voltage rating: 300VAC
- Current rating: 7A
- Withstanding Voltage: 1.6KV
- Operating temperature: -30°C to +105°C
- Soldering temperature: 250°C ± 10°C 5 seconds max
- Safety Approval:

RoHS Compliant

PART NUMBER:

**OSTVZXX5050**

No. of Poles  
02: 2 Poles  
:  
:  
24: 24 Poles

COLOR

- 0: Black
- 5: Green (Standard)
- 6: Blue
- 8: Grey

THESE DRAWINGS AND SPECIFICATIONS ARE THE PROPERTY OF ON-SHORE TECHNOLOGY, INC. AND SHALL NOT BE REPRODUCED, COPIED OR USED IN ANY MANNER WITHOUT THE PRIOR WRITTEN CONSENT OF ON-SHORE TECHNOLOGY, INC.



TITLE		OSTVZ 5.08mm Series 2p-24p with flange				
PART NO.	OSTVZXX5050	DWG NO.	OSTVZXX5050.DWG			
APPROVED	CHECKED	DESIGNED	DRAWN	CUST NO.	Tolerance	
Shi Jun 2006.11.07	Marvin 2006.11.07	Marvin 2006.11.07	Marvin 2006.11.07			UNIT: mm
						SCALE: NONE
					SHEET: 01/01	REV.: E
						X. ±0.50
						X.X ±0.30
						X.XX ±0.10
						X° ±1°