



4G LTE
M2M ROUTER



DIGI TRANSPORT® WR31

Intelligent 4G LTE router designed for critical infrastructure and industrial applications

The Digi TransPort WR31 is an intelligent 4G LTE router designed for critical infrastructure and industrial applications. It provides a secure, reliable connection to industrial controllers, process automation equipment and smart grid assets on third party sites or remote locations. Software-defined, multi-carrier networking and global LTE and HSPA+ options make it easy to get connected. This drop-in connectivity gives operators a way to reduce downtime and service calls and also increase revenue by bringing distributed sites online faster.

Ideal for Connecting:

- Building and process automation controllers
- Smart grid assets (meters, switches, controllers)
- IP cameras and access controllers
- Remote data loggers, flow meters and sensing equipment
- Telco infrastructure
- Traffic and obstruction lighting

BENEFITS

- Global HSPA+ and 4G LTE support and certification on major carrier networks around the world
- Ethernet, serial I/O and Modbus bridging for connecting diverse field assets
- Extremely resilient cellular connection through Digi's patented SureLink™, VRRP+ protocol, and dual SIM slots
- License-free enterprise software: VPN, firewall, logging and authentication
- Digi Remote Manager provides mass configuration, device management, and troubleshooting tools
- Rugged enclosure, optimized for DIN rail or shelf mounting
- C1D2 and ATEX rated; NEMA TS2 temperature rated

RELATED PRODUCTS



Digi TransPort® WR21



Digi TransPort® WR44 R



Digi Connect® Sensor+

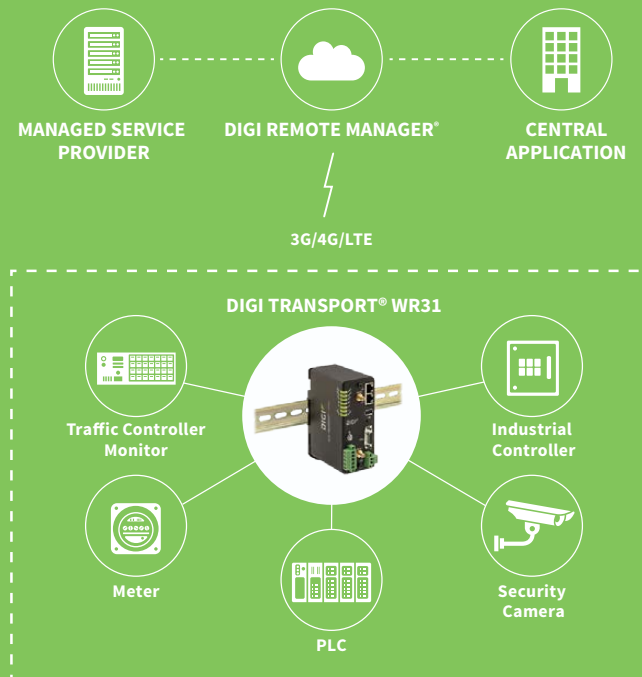


Accessories



Digi Remote Manager®

APPLICATION EXAMPLE



SPECIFICATIONS

Digi TransPort® WR31

WIRELESS INTERFACES

CELLULAR

LTE - ANZ/LATAM (L9)	LTE-Advanced CAT 6: 700(B28)/850(B5,B18,B19)/900(B8)/1500(B21)/1800(B3)/1900(B39)/2100(B1)/2600(B7,B38)/2300(B40)/2500(B41) 3G HSPA+: 800/850/900/1700/2100 MHz Transfer rate (max): 300 Mbps down, 150 Mbps up
LTE - NORTH AMERICA (M5)	LTE CAT 4: 700(B12,13)/850(B5)/AWS(B4)/1900(B2) 3G HSPA+: 850/1900 MHz Transfer rate (max): 150 Mbps down, 50 Mbps up Approvals: PTCRB, AT&T, Telus (pending)
LTE - EMEA/APAC (M7)	LTE CAT 4: 800(B20)/900(B8)/1800(B3)/2100(B1)/2600(B7) HSPA: 900/2100 MHz EDGE: 900/1800 MHz Transfer rate (max): 150 Mbps down, 50 Mbps up Approvals: Vodafone (pending)
LTE 450 - EMEA/APAC (M2)	LTE CAT 3: 450(B31)/800(B20)/1800(B3)/2600 (B7) HSPA+: 900/2100 MHz EDGE: 900/1800 MHz Transfer rate (max): 100 Mbps down, 50 Mbps up
GLOBAL HSPA+ (U9)	3G HSPA+: 850/900/1700AWS/1900/2100 MHz 2G EDGE/GPRS: 850/900/1800/1900 MHz Transfer rate (max): 21 Mbps down, 5.76 Mbps up Approvals: PTCRB, Vodafone
CDMA EV-DO 450 MHZ - EMEA (D5)	3G EVDO Rev B: 450 MHz 2G 1XRTT: 450 MHz Transfer rate (max): 14.7 Mbps down, 5.4 Mbps up

CONNECTORS

(2) 50 Ω SMA (center pin: female)

SIM SLOTS

(2) Mini-SIM (2FF)

SIM SECURITY

Screw-down SIM cover

SOFTWARE & MANAGEMENT

REMOTE MANAGEMENT

Digi Remote Manager® (cloud based); SNMP v1/v2c/v3 (user installed/managed)

LOCAL MANAGEMENT

WebUI (HTTP/HTTPS); CLI (Telnet, SSH, SMS)

MANAGEMENT/
TROUBLESHOOTING TOOLS

FTP, SFTP, SCP; Protocol analyzer with PCAP for Wireshark; Event logging with Syslog and SMTP; NTP/SNTP

WIRED INTERFACES

ETHERNET

PORTS

(2) RJ-45; 10/100 Mbps (auto-sensing)

SERIAL

PORTS

(1) DB-9; DCE

STANDARD

RS-232/422/485

SIGNAL SUPPORT

TXD, RXD, RTS, CTS, DTR, DCD, DSR, RI

FLOW CONTROL

Software (XON/XOFF), hardware supported

I/O

CONNECTOR

5-pin screw down terminal block

DIGITAL

0-30 VDC, 200mA max.; (2) I/O, software -selectable

ANALOG

(1) analog I/O; 4-20mA or 0-10V, software selectable; 12 bit resolution

USB

PORTS

(1) USB 2.0 Type A

PHYSICAL

DIMENSIONS (L X W X H)

5 in x 3.5 in x 2 in (12.7 cm x 8.9 cm x 5.1 cm)

WEIGHT

1.1 lb. (.5 kg)

STATUS LEDS

Power, service, WWAN, 3x signal strength, User programmable

ENCLOSURE/RATING

Aluminum / IP30

MOUNTING

DIN rail mount included

SPECIFICATIONS

Digi TransPort® WR31


POWER REQUIREMENTS

POWER INPUT	9 – 30 VDC, 18W min power source required
POWER CONNECTOR	Screw down removable terminal block
POWER CONSUMPTION	4W typical (Idle); 12W typical (Peak Tx/Rx)

ENVIRONMENTAL

HAZARDOUS (CLASS 1 DIV 2)	Yes
OPERATING TEMPERATURE	-34° C to +74° C (-29° F to +165° F); (Reduced cellular performance may occur above +60° C)
STORAGE TEMPERATURE	-40° C to +85° C (-40° F to +185° F)
ETHERNET ISOLATION	1.5 kV RMS
SERIAL PORT PROTECTION (ESD)	15 kV
RELATIVE HUMIDITY	5% to 95% (non-condensing)

APPROVALS

CELLULAR	PTCRB
SAFETY	Hazardous locations: ANSI/ISA-12.12.01-2015, CAN/CSA C22.2 NO.213-15 Ordinary locations: UL 60950-1, 2nd Edition, 2014-10-14; UL 62368: 2014, 2nd Edition ATEX standards: Protection method  II 3 G Ex nA IIC T4 Gc EN 60079-0:2012+A11:2013, EN 60079-15:2010, DEMKO 15 ATEX 1574X Rev. 1
IECEX STANDARDS	US/UL/ExTR17.0077/00
EMISSIONS/IMMUNITY	CE, FCC Part 15 Class B, AS/NZS CISPR 22, EN55024, EN55022 Class B

WARRANTY

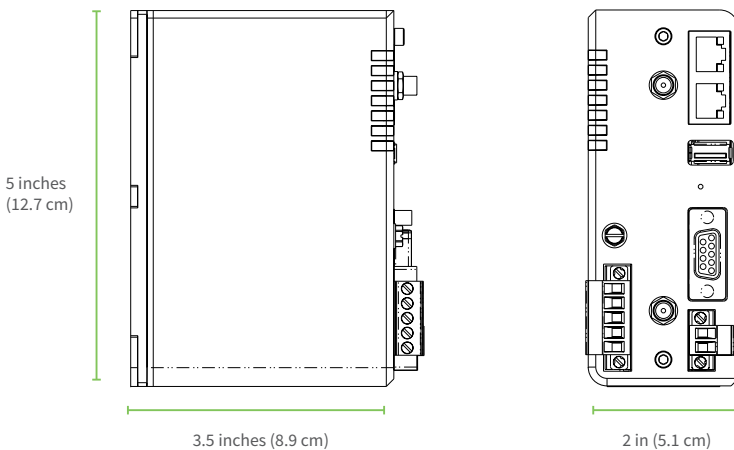
PRODUCT WARRANTY	5 years
-------------------------	---------

ENTERPRISE SOFTWARE

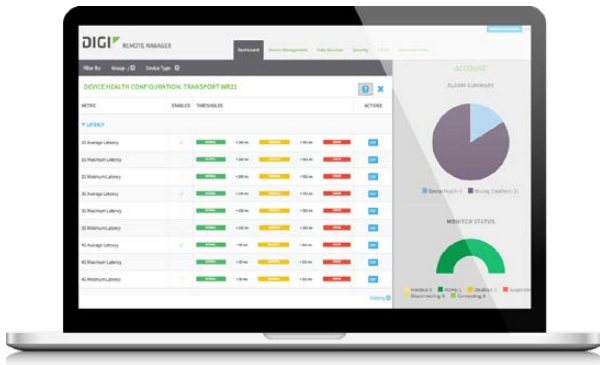
DESCRIPTION

PROTOCOL SUPPORT	HTTP, HTTPS, FTP, SFTP, SSL, SNMP, SNMP (v1/v2c/v3), SSH, Telnet and CLI for web management; Remote management via Digi Remote Manager; SMS management, protocol analyzer, ability to capture PCAP for use with Wireshark; DynDNS, Dynamic DNS client compatible with BIND9/No-IP/DynDNS
SECURITY/VPN	IP filtering, stateful inspection firewall with scripting, address and port translation; VPN: IPsec with IKEv1, IKEv2, NAT Traversal; SSL, SSLv2, SSLv3, FIPS 197, Open VPN client and server; PPTP, L2TP; (5) VPN tunnels (upgradable to a maximum of 50); Cryptology: SHA-1, MD5, RSA; Encryption: DES, 3DES and AES up to 256-bit (CBC mode for IPsec); Authentication: RADIUS, TACACS+, SCEP for X.509; certificates; Content filtering (via 3rd party); MAC address filtering; VLAN support
ROUTING/FAILOVER	IP pass-through; NAT, NAPT with IP port forwarding; Ethernet bridging; GRE; Multicast routing; Routing protocols: PPP, PPPoE, RIP (v1, v2) OSPF, SRI, BGP, iGMP routing (multicast); RSTP (Rapid Spanning Tree Protocol); IP failover: VRRP, VRRP+TM; Automatic failover/failback to second GSM network/standby APN
OTHER PROTOCOLS	DDHCP; Dynamic DNS client compatible with BIND9/No-IP/DynDNS; QoS via TOS/DSCP/WRED; Modbus UDP/TCP to serial; X.25 including XOT, SNA/IP, TPAD and PAD; Protocol switch; Modbus bridging for connecting diverse field assets

PRODUCT IMAGES



DIGI REMOTE MANAGER®



CAPABILITIES

- Centralized management of remote devices over 3G/4G/LTE
- Define standard configurations and automatically monitor individual devices for PCI security compliance
- Report and alert on performance statistics, including connection history, signal quality, latency, data usage and packet loss
- No servers or applications to operate and maintain
- Complete tasks for your entire device network in minutes
- Edit configurations and update firmware for your individual devices or groups
- Monitor the status and location of your remote device via a web browser
- Active or deactivate cellular lines and monitor data to ensure you never incur overage charges

INFRASTRUCTURE

- Hosted in a commercial-grade SAS 70-certified environment
- Superior availability, operating to 99.9% or greater
- Open APIs available to support application development

SECURITY

- Certified SSAE-16 and ISO27001 facilities
- Over 175 security controls in place to protect your data
- Enables compliance with security frameworks like PCI, HIPAA, NIST and more
- Earned SkyHigh's Cloud Trust Program highest ranking of Enterprise-ready
- PCI certified; Attestation of Compliance

PART NUMBERS	DIGI TRANSPORT WR31
WR31-L92A-DE1-TB	4G LTE LATAM/ANZ
WR31-M52A-DE1-TB	4G LTE North America
WR31-M72A-DE1-TB	4G LTE EMEA/APAC
WR31-M22A-DE1-TB	4G LTE 450MHz International
WR31-U92A-DE1-TB	HSPA+ Global
WR31-D52A-DE1-TB	CDMA 450MHz

PART NUMBERS	ACCESSORIES*
76000736	AC Power Supply - 12 VDC, extd temp
76000926	Antenna - Cellular 699 MHz to 2690 MHz

*Sold separately, unless otherwise noted.

DIGI SERVICE AND SUPPORT / You can purchase with confidence knowing that Digi is always available to serve you with expert technical support and our industry leading warranty. For detailed information visit www.digi.com/support.

© 1996-2018 Digi International Inc. All rights reserved.
All trademarks are the property of their respective owners.

91003183
B10/1217

DIGI INTERNATIONAL WORLDWIDE HQ
877-912-3444 / 952-912-3444 / www.digi.com

DIGI INTERNATIONAL GERMANY
+49-89-540-428-0

DIGI INTERNATIONAL JAPAN
+81-3-5428-0261 / www.digi-intl.co.jp

DIGI INTERNATIONAL SINGAPORE
+65-6213-5380

DIGI INTERNATIONAL CHINA
+86-21-50492199 / www.digi.com.cn

