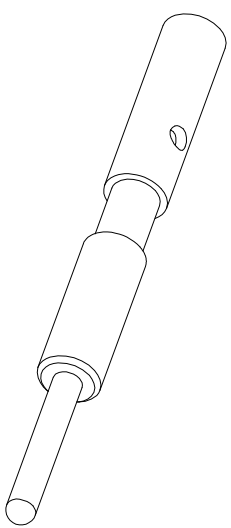
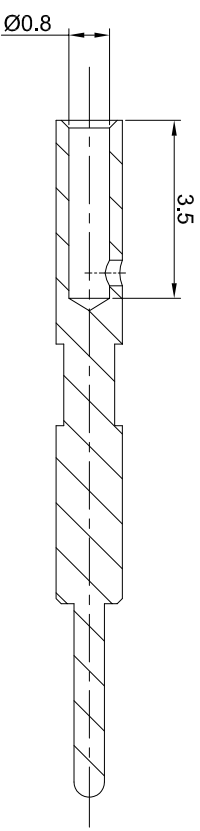
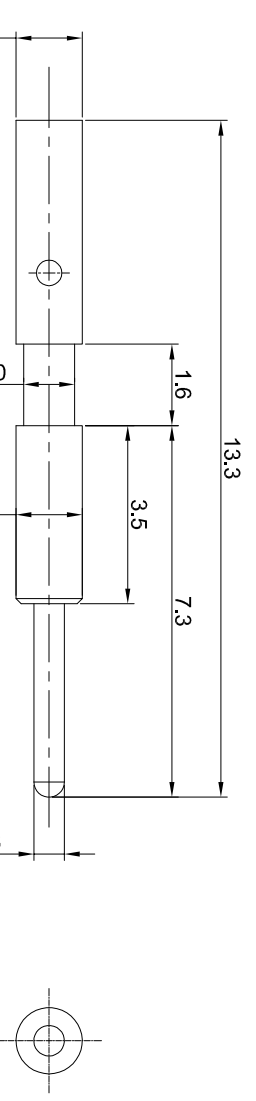


REVISIONS				
REV	ECO	DESCRIPTION	DATE	BY
A1	-	RELEASED DRAWING	Jun.05.2018	White TOMMAY



- NOTES: UNLESS OTHERWISE SPECIFIED
- MATERIAL: COPPER ALLOY, GOLD PLATED
  - SPECIFICATIONS:
    - RATED CURRENT: 0.5 AMPS
    - CONTACT RESISTANCE: <12.5 milliohm
    - AVAILABLE WIRE RANGE: 22AWG-26AWG
    - ROHS COMPLIANT
  - ALL DIMENSIONS ARE FOR REFERENCE USE ONLY.

QUANTITY	SEE PART NUMBER CHART	PART NUMBER	DESCRIPTION	ITEM

**MATERIALS LIST**

UNLESS OTHERWISE SPECIFIED	SIGNATURES	DATE	SIZE	TYPE	DWG NO.	REVISION
1) All dimensions are in millimeters. 2) Tolerances are as follows: A Pl. DEC 2014 ±.104 B Pl. DEC 2014 ±.104 C Pl. DEC 2014 ±.104 3) Note reference =	DRAWN: White CHECKED: Tod ENGINEER:	Jun.05.2018 Jun.05.2018 Jun.05.2018	B C- NONE		SC000459	A1

PROCESS SPECIFICATIONS:	CUSTOMER:	THIS DRAWING IS SUPPLIED FOR INFORMATION ONLY. DESIGN FEATURES, SPECIFICATIONS AND PERFORMANCE DATA ARE THE PROPERTY OF AMPHENOL CORPORATION. NO RIGHTS OR PERMISSIONS ARE GRANTED FOR REPRODUCTION OR TRANSMISSION IN ANY FORM OR BY ANY MEANS, ELECTRONIC OR MECHANICAL, INCLUDING PHOTOCOPYING, RECORDING, OR BY ANY INFORMATION STORAGE AND RETRIEVAL SYSTEMS. SEE SPECIFICATION FOR MANUFACTURING VARIATIONS.	APPROVAL: Tommy Jun.05.2018	Pin contact 0.6mm, Chimp 22-26AWG
MATERIAL SPECIFICATIONS:				
NEE PARTS:				