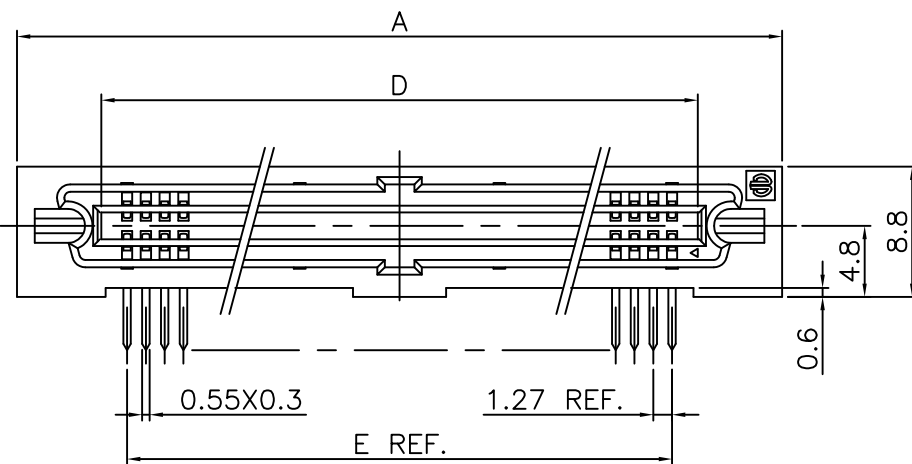
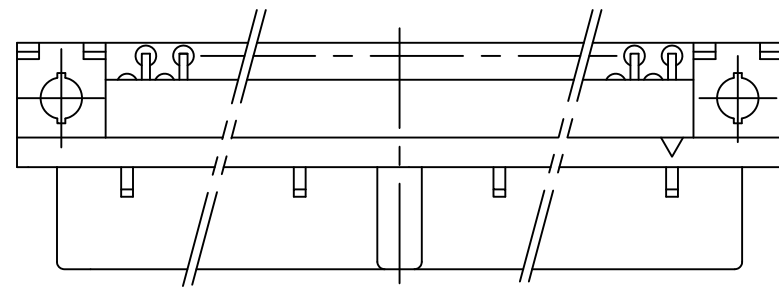
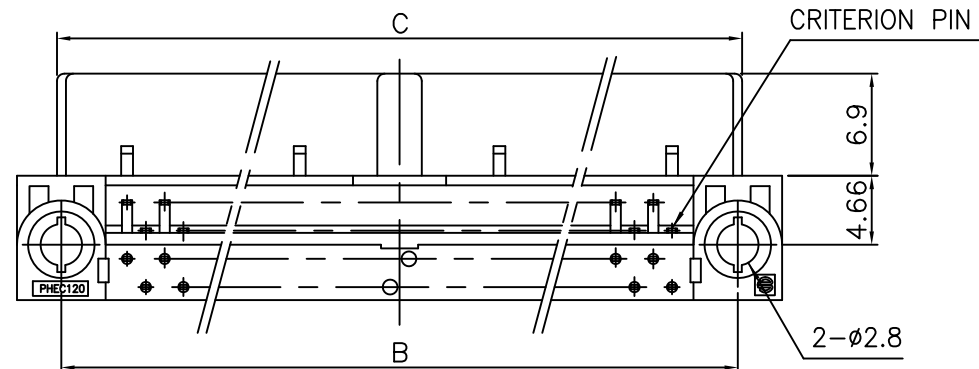


PRODUCT NO.

JSC 97409

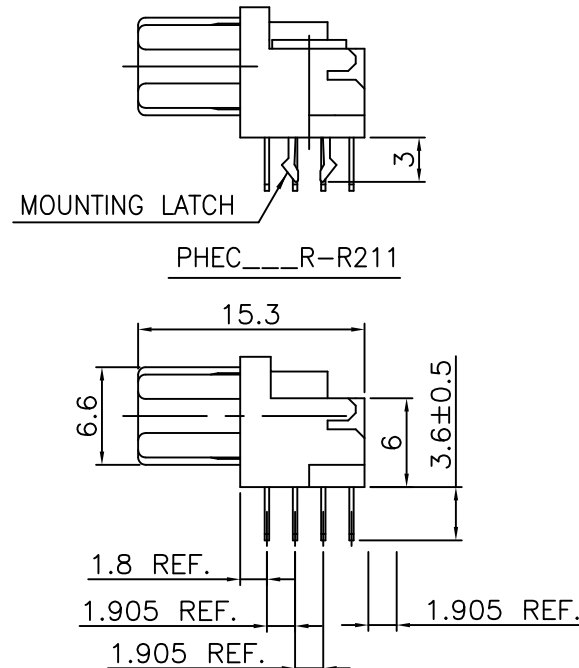
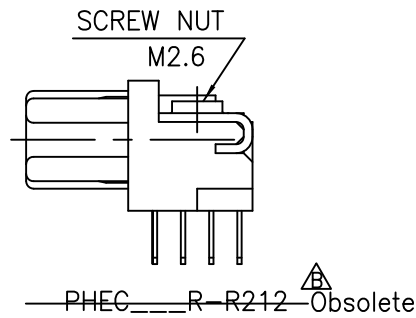


NO. OF CONTACTS:40,60,68,80,100,120



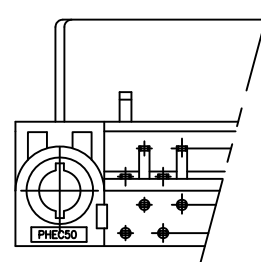
NOTES

- BODY, LOCATOR MATERIAL : PBT GLASS FILLED (UL94V-0), COLOR BLACK
- TERMINAL MATERIAL : PHOSPHOR BRONZE
- MOUNTING LATCH MATERIAL : PHOSPHOR BRONZE
- SCREW NUT : STEEL
- TERMINAL FINISH
CONTACT AREA : GOLD 0.25µm min. OVER NICKEL UNDERLAYER
SOLDER TAILS : PURE Sn 2µm min. OVER NICKEL UNDERLAYER
- MOUNTING LATCH FINISH : PURE Sn 2µm min. OVER NICKEL UNDERLAYER
- SCREW NUT FINISH : NICKEL
- THIS PRODUCT MEETS EUROPEAN UNION DIRECTIVES AND OTHER COUNTRY REGULATIONS AS DESCRIBED IN GS-22-008
- THE HOUSING WILL WITHSTAND EXPOSURE TO 260 DEGREE PEAK TEMPERATURE FOR 10 SECONDS IN A WAVE SOLDER APPLICATION WITH A 1.6mm MINIMUM THICK CIRCUIT BOARD.



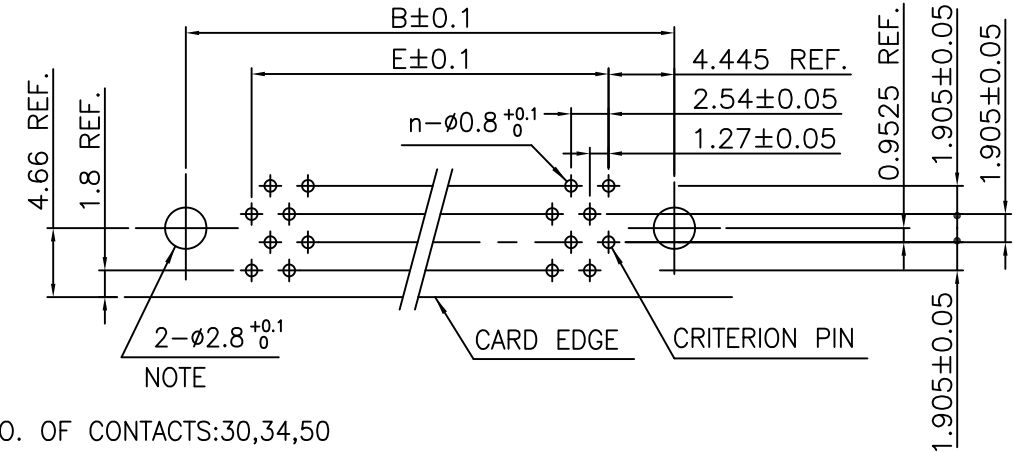
PHEC_R-R210

NO. OF CONTACTS:30,34,50

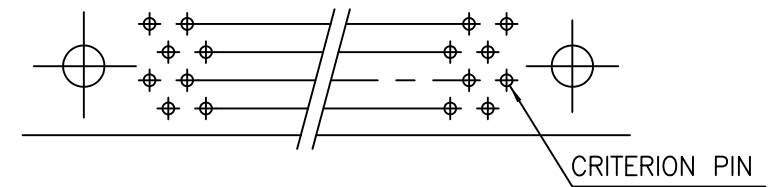


RECOMMENDED PC BOARD
THICKNESS:1.6±0.2
HOLE PATTERN (COMPONENT SIDE)

NO. OF CONTACTS:40,60,68,80,100,120 (n:NO. OF CONTACTS)



NO. OF CONTACTS:30,34,50



NOTE : THROUGH-HOLES FOR MOUNTING LATCHES ALSO SHOULD BE PLATED.

| CAT. NO. | NO. OF CONTACTS (MATING SIDE) | DIMENSIONS | | | | |
|-----------------|----------------------------------|------------|-------|-------|-------|-------|
| | | A | B | C | D | E |
| PHEC30R-R21_LF | 15/ROW X 2 ROWS | 32.67 | 26.67 | 27.26 | 21.26 | 17.78 |
| PHEC34R-R21_LF | 17/ROW X 2 ROWS | 35.21 | 29.21 | 29.80 | 23.80 | 20.32 |
| PHEC40R-R21_LF | 20/ROW X 2 ROWS | 39.02 | 33.02 | 33.61 | 27.61 | 24.13 |
| PHEC50R-R21_LF | 25/ROW X 2 ROWS | 45.37 | 39.37 | 39.96 | 33.96 | 30.48 |
| PHEC60R-R21_LF | 30/ROW X 2 ROWS | 51.72 | 45.72 | 46.31 | 40.31 | 36.83 |
| PHEC68R-R21_LF | 34/ROW X 2 ROWS | 56.80 | 50.80 | 51.39 | 45.39 | 41.91 |
| PHEC80R-R21_LF | 40/ROW X 2 ROWS | 64.42 | 58.42 | 59.01 | 53.01 | 49.53 |
| PHEC100R-R21_LF | 50/ROW X 2 ROWS | 77.12 | 71.12 | 71.71 | 65.71 | 62.23 |
| PHEC120R-R21_LF | 60/ROW X 2 ROWS | 89.82 | 83.82 | 84.41 | 78.41 | 74.93 |

| | | | | | | | | |
|-----------------|----------------|-------------|------|--------------------|---------------------------------------|------------|------------------------------|---------|
| mat'l. code --- | | | | surface ISO 1302 ✓ | tolerance ISO 406 ISO 1101 | projection | product family PHEC | CODE JP |
| ltr | description | ecn no | dr | date | tolerances unless otherwise specified | MM | title | |
| A | RELEASED | J08-0178 | S.W | 2008-4-18 | 0.X ±0.3 | scale N/A | PRINTED CIRCUIT CONNECTOR | |
| B | EOL of R212LF | ELX-J-17067 | S.W | 2014-2-27 | 0.XX ±0.3 | | (CAT.NO.PHEC _ _ _ R-R21_LF) | |
| | | | | | 0.XXX ±0.3 | | dwg no sheet 1 of 1 size | |
| | | | dr | S.Watanabe | 2014-2-27 | FCJ | JSC 97409 A3 | |
| | | | enr | S.Watanabe | 2014-2-27 | | type Customer Drawing | |
| | | | chr | K.Ito | 2014-2-27 | | | |
| | | | appd | Y.Kameda | 2014-2-27 | | | |
| sheet index | revision sheet | B 1 | | | | | | Rev. B |