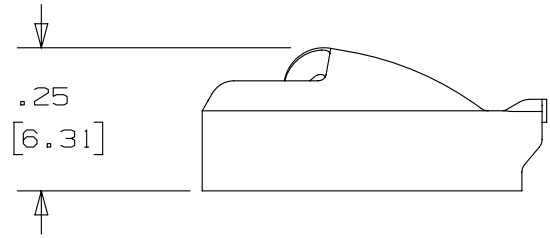
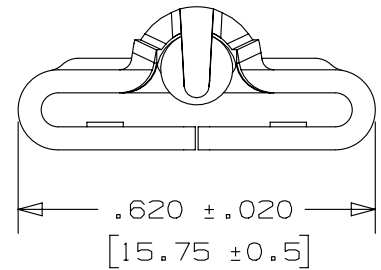
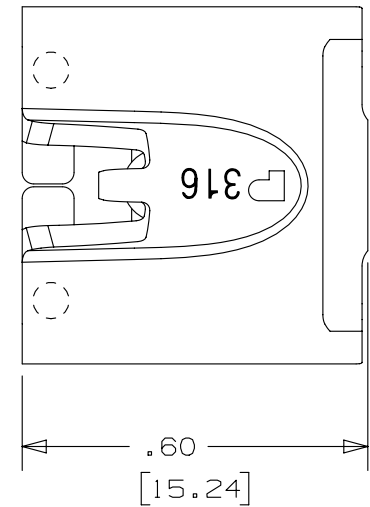


THIS COPY IS PROVIDED ON A RESTRICTED BASIS AND IS NOT TO BE USED IN ANY WAY DETRIMENTAL TO THE INTERESTS OF PANDUIT CORP.

NOTES:

1. TO BE USED WITH PANDUIT METAL BANDING MBCEH-QR316
2. INSTALLATION TOOLS: RT2HT, ST2MT, PBTMT, RT2HTN
3. BRACKETS [] DENOTES DIMENSIONS IN MILLIMETERS
4. MINIMUM LOOP TENSILE STRENGTH: 300 LBS (1335 newtons)
5. TOLERANCES: .X = ±.030 [.762]
 .XX = ±.020 [.508]
 .XXX = ±.010 [.254]
 ANGLES = ±2°
6. MATERIAL: 316 STAINLESS STEEL



REV	DATE	BY	CHK	APR	DESCRIPTION	ECN
02A	4/13	JAMB	MIM	RGRO	UPDATE DRAWING TO NEW GLOBAL PANDUIT TITLE BLOCK WITH PANDUIT LOGO	SSECN01047
01A	7/11	JAMB	MIM	---	REMOVED INSTALLATION TOOL ST3MT. ADDED INSTALLATION TOOL ST2MT, PBTMT, RT2HTN	----
00A	10/08	JAMB	SKB	---	ORIG CAD FILE SPEC WAS S41197_00. NOTE 2: APPLICATION TOOL RT1HT REPLACED BY RT2HT	----
00	9/05	JAMB	EJD	---	DRAWING RELEASED	SS00053

TITLE		METAL LOCKING TIE HEAD - EXTRA HEAVY DUTY - FOR FULLY COATED BANDING PART NUMBER MTHCEH-C316		
CUSTOMER DRAWING				
ITEM REVISION NAME		N41197BS/02		
DATASET FILE NAME		N41197BS_DC/02A		
UNLESS OTHERWISE SPECIFIED, DIMENSIONAL TOLERANCES ARE: IN [mm]		PANDUIT MATERIAL: SEE NOTES DRAWING NUMBER: N41197BS_DC		
.x ± .1 [2.54] .xxx ± .005 [.127] .xx ± .01 [.25] ANGLES ± 5 °				
THIRD ANGLE PROJECTION		DRAWN BY: JAMB DATE: 9/16/05 CHK: EJD SCALE: 3:1 SHT 1 OF 1 SIZE: A		