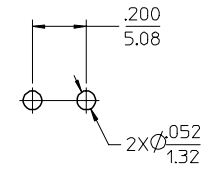
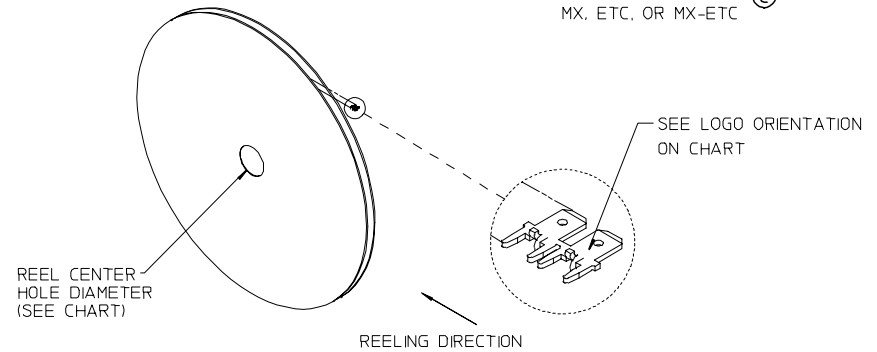
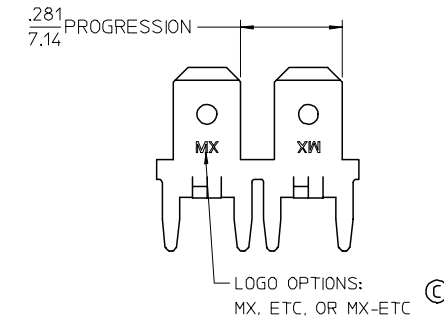
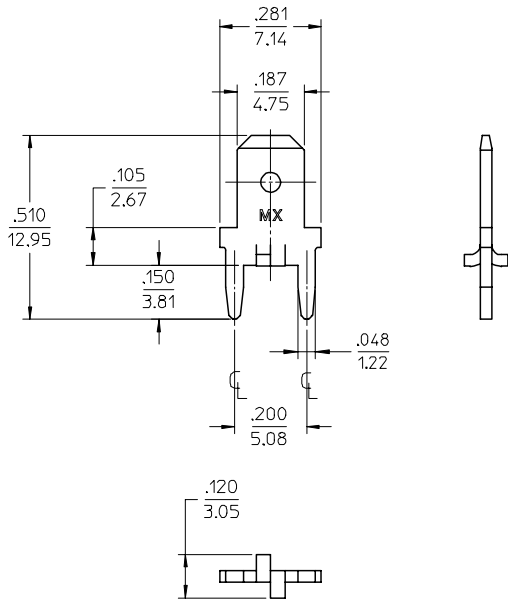


13	12	11	10	9	8	7	6	5	4	3	2	1
MATERIAL NUMBER	ENGINEERING NUMBER	CARRIER	TAB THICKNESS	LOGO ORIENTATION	REEL CENTER HOLE \varnothing REF.							
197084023	19708-4023	STRIP	.020/0.51	IN	.750/19.05							
197084033	19708-4033	STRIP	.032/0.81	IN	1.250/31.75							



RECOMMENDED PCB HOLE LAYOUT



NOTES:

1. BARE EDGES PERMISSIBLE AT CARRIER CUT OFF.
2. MATERIAL: BRASS C26000
3. MATERIAL THICKNESS: SEE CHART
4. TAB CONFORMS TO NEMA SPECIFICATIONS.
5. ALL DIMENSIONS AND NOTES REFERENCE UNLESS OTHERWISE NOTED.
6. PLATING: MATTE TIN, 150 μ IN/3.81 μ mm MINIMUM THICKNESS OVER NICKEL 50 μ IN/1.25 μ mm MINIMUM THICKNESS.
7. REF.: 10,000 MINIMUM PARTS PER REEL, REEL HAS 24" DIAMETER REEL WITH A (SEE CHART) DIAMETER CENTER HOLE.
8. PART IS ROHS COMPLIANT.

ADDITIONAL LOGO OPTIONS & ROHS EC NO: ETC2007-0338 DRAWN BY: DRW:NEHLE 2007/03/15 CHECKED BY: CHK:JMACNEIL 2007/03/26 APPR: JMACNEIL 2007/03/27 REVISIONS:	QUALITY SYMBOLS 	GENERAL TOLERANCES (UNLESS SPECIFIED) <table border="1"> <tr> <th></th> <th>mm</th> <th>INCH</th> </tr> <tr> <td>4 PLACES</td> <td>± .005</td> <td>± .0005</td> </tr> <tr> <td>3 PLACES</td> <td>± .013</td> <td>± .001</td> </tr> <tr> <td>2 PLACES</td> <td>± 0.25</td> <td>± .010</td> </tr> <tr> <td>1 PLACE</td> <td>± 0.25</td> <td>± .010</td> </tr> <tr> <td colspan="3">ANGULAR ± 1 °</td> </tr> </table>		mm	INCH	4 PLACES	± .005	± .0005	3 PLACES	± .013	± .001	2 PLACES	± 0.25	± .010	1 PLACE	± 0.25	± .010	ANGULAR ± 1 °			DIMENSION STYLE IN/MM	SCALE 4:1	DESIGN UNITS INCH	THIRD ANGLE PROJECTION
		mm	INCH																					
4 PLACES	± .005	± .0005																						
3 PLACES	± .013	± .001																						
2 PLACES	± 0.25	± .010																						
1 PLACE	± 0.25	± .010																						
ANGULAR ± 1 °																								
DRAWN BY: JPAWLICK CHECKED BY: RDEROSS APPROVED BY: RDEROSS MATERIAL NO. DATE: 01/06/14 DATE: 01/06/15 DATE: 01/06/15	TITLE QUICK DISCONNECT, PCB MOUNT, .187 X .032/.020 TAB W/STABILIZERS	MOLEX INCORPORATED DOCUMENT NO. SD-19708-001	SHEET NO. 1 OF 1																					